

South Bay Quilters Guild

Volume XXXIII, No. 1 Established 1979

July 2011

President's Corner

Pam Overton

And so a new guild year begins. We're still in the planning stages, but we hoping to implement some additional changes in the guild that will help us save money and "go greener". In August we'll begin the membership renewal process. As we ended the 2010/2011 guild year our newsletter editor was still printing and mailing out 64 guild newsletters. That's over 1/3 of our membership. While we realize that some of our members do not have computer access we also know that most of the membership does have computer access. As you renew your membership please consider opting for an electronic copy of the newsletter. You can go to the guild website to download the PDF file or you can simply print what is enclosed in your notification e-mail. On average it costs us \$1.65 per newsletter to print and mail it. If one member opts for electronic delivery that will save us \$19.80 annually. If 50 people opt for electronic we save \$990. We can do a lot with that . . . programs, community service, philanthropy. Think about it.

By now you are all aware that we've lost our connection to Amazon. As Sherilyn put it, "it was nice while it lasted." For those of you that help supported the guild by shopping at Amazon via our website link, we thank you!

Don't forget we are dark this month - no guild meeting. We want you to have plenty of time to visit and enjoy the Long Beach International Quilt Festival. (Tickets are available on line for the show or drop by Luella's Quilt Basket to purchase your ticket.) The preview is Thursday night, July 28 from 5:00 to 9:00 pm. The show is open Friday, Saturday, and Sunday during the day. Our quilt will be on display to sell tickets on Thursday night and Sunday afternoon. Stephania does have a few more white glove slots to fill over the weekend, so please contact her if you can help.

I'm looking forward to the coming guild year. We have some new faces on the board and I'm sure that together we'll bring you some great speakers, workshops and activities. See you at our next guild meeting on Tuesday, August 16th! Pam ♦♦

Workshops

Janet Coggins 424-206-1258 janetcoggins@gamil.com

Helen Lu 310-544-3487

August 17, 2011

Frances Moore will be teaching her "Object of My Affection" Workshop. This is a class designed to give the advanced beginner to advanced quilter the opportunity to explore several design techniques and sewing techniques to create an art quilt focusing on a specific person, place or thing. The object is then shadowed within the block and or outside the block. Hand appliqué as well as piecing skills are needed. Direction for the sample quilt will be given. Creative options are encouraged. ♦♦



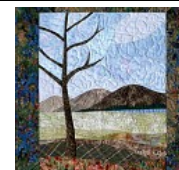
September Workshop

Janet Coggins will be teaching a beautiful Tote using her patterns. You may choose a block from any of Janet's patterns and any of her sunset fabrics so you will be able to customize your own project. The kit will be \$12.00 in addition to cost of class. ♦♦



October Workshop

Sue Rasmussen will be teaching an introduction to the curved machine piecing technique for landscape and pictorial quilts. In this class, students will cover design techniques, fabric choices, marking, sewing and pattern development working directly with fabric. To simplify and allow more time for learning these techniques, Sue has designed a simple landscape pattern (22" X 28") of a Single Tree Landscape, available to students in this class. By utilizing this pattern, students will immediately begin learning the process of working on landscape quilts without taking hours to design an individual piece. ♦♦



Workshops—

There has been a change in the speaker and workshop for September. Dale Fleming has cancelled.

Janet Coggins is new to the Guild and comes to us with a great deal of experience and her own design business. You may want to look at her website at www.dogwooddesigns.biz.

Newsletter Editor

Carol Berg—310-5210-0212



Become a Print Buddy –Perhaps someone who is your neighbor or is in your friendship group is receiving a paper copy because they do not have computer access or they have no printer. It costs only pennies to print the newsletter on a home printer. If you are not sure how to print the newsletter in black and white call me. Would you consider printing a Black and White copy and giving it to them?

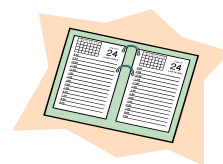
Paper Copy – If you are reading a paper copy of this newsletter because you do not have computer access perhaps you would consider going to the library for access? If you are unsure how to use the computer we can arrange for someone to teach you to go to the Guild Website and access the newsletter. Once you see it in color you will really be surprised and want to read it there, but if you want to print a few pages to take with you the library has a printer. Want to learn how to do this, please call!

Mailers –It takes about 2 hours a month to fold, stamp, sticker and place the address labels on the newsletters once they are printed. Perhaps you don't want to go to another meeting each month, but would volunteer to take over this part of the task of sending out the newsletters.

Photographer – Do you like to take pictures? We can expand the newsletter on the web to include more pictures if we can get someone to take a picture of the show and tell quilts and Read-Me-a-Quilt and Wounded Warrior Quilts? Would you be willing? All you need is the willingness.

Call me if you would be willing to do any of these things.

Guild Calendar



July	No Guild Meeting
July 29	Newsletter Deadline! Please send all newsletter articles to Carol Berg grmaschr2@yahoo.com
August 2	Guild Board meeting at Coco's in Manhattan Village Mall. Business meeting begins at 6:30pm. All members are welcome!

Travel

Sue Glass, has organized another "day tour" for the quilt guild. **Saturday, September 10** - we're off to the **San Diego Quilt Show**, The Mingei International Museum at Balboa Park to see "Bold Expressions: African American Quilts, and finally, we'll stop at Quilters Paradise in Escondido.

The price of \$48 includes the air conditioned motor coach, driver's tip, refreshments, and admission to the Museum. The exhibition showcases more than fifty quilts made throughout the American South between 1910 and the 1970s. "Stunning color combinations and distinctively free patterns epitomize an artistic vision that is unique to the American folk art tradition. African American quilts, made entirely by women, are celebrated for their bold improvisation and modern take on traditional quilting patterns, such as the House Top or Log Cabin, Star of Bethlehem and Pine Burr. Many of the quilts are made from materials that were readily available to the makers, including flour sacks, old blue jeans and work clothes and fabric remnants. This early form of recycling and reuse was a necessity that became the foundation for unique expression. The exhibition will also explore a variety of construction techniques and quilting.

Register - You can register to attend this fun bus trip by calling Sue or sending her a check. Eva Killingsworth will be taking reservations at the August guild meeting in Sue's absence. We need 30 signups to make this trip go, and the August guild meeting will be your final opportunity to get your name on the list. Guests are always welcome, and we are waiving the additional \$5 for this trip only.◇◇

PARLIAMENTARIAN - Nancy Jengo

Here are the results of our election last month. Thank you to all who stepped forward to be on the board.

2011 Election Results

President	Pam Overton
Vice President	Janet Coggins and Helen Lu
Recording Secretary	Pat Bryan
Treasurer	Sharon Bohner
Newsletter Editor	Carol Berg
SCCQG Representative	Melanie Dreike
Membership Co-Chair	Stephania Bommarito
Membership Co-Chair	Nancy Payne
2011 Fashion Show Chair	Lois Grover
2012 Quilt Show Chair	Stephania Bommarito
2012 Quilt Show Treasurer	Vivian Ruddy
2012 Fashion Show Chair	Carolee Scheugraf
2013 Quilt Show Chair	Stephania Bommarit
2013 Quilt Show Treasurer	Red Winter

The following **appointments were approved** at the July 12th board meeting:

Community Service	Janet Akman
Facilities	Karen Rakita
Hospitality - Holiday Dinner	Mary Ann Sereth
- June dinner	Mary Ann Sereth
Intra-Guild Coordinators	Dee Evans and Tracy Finnell
Membership Assistant	Joanne Stine
Parliamentarian	Nancy Jengo
Corresponding Secretary	Bea Savellano
Internal Auditor	Sharon Amos
Read Me a Quilt	Julie Maas
Quilts for Wounded Warriors	Arlene Zobrist
Publicity/Public Relations Coordinator	Diane Davisson
Webmistress	Sherilyn Guernsey



These **positions are still available**. Call Pam if you are interested in serving on the board.

Patchwork Star

Historian/Photographer

Hospitality-Monthly Meeting

Librarian

Travel

Scrap Bag

Tami Oxenrider has asked our guild for help with a research paper. She is writing a paper on quilting in America for college. The title is "Quilting: is there a comeback". I would appreciate it you could put these questions in your newsletter.

1. Over the past five (5) years would you say that the interest in quilting has decreased, increased or remained the same?
2. How many years have you been quilting?
3. That type of quilts do you like to make – Art quilts or traditional?
4. What size do you regularly make – wall, baby, bed size, table runner or other?
5. About how many quilts do you make per year?
6. Do you quilt your own or take it to a long arm quilter?
7. Do you hand sew/quilt any of your quilts?
8. What would you say the age range of you guild is?
9. What state do you live in?

Do you do any quilts for charities?

For the Long arm quilters:

1. Do you quilt for others?
2. Do you have a store front or do you quilt in your home?
3. About how many quilts do you quilt in a month?

When would you say the busiest time for quilting is and do you have a cutoff date for Christmas quilts?

You can either **mail** the answers to:

Tami Oxenrider
502 Providence Drive
Bryant, AR 72022

Or E-mail decox@yahoo.com. Please place "Quilt Research" in the subject line.

Thank you for all your help.
Tami Oxenrider

QUILT SHOW 2012 BUDGET	
Income & Expenses	
-- Income --	
Acquisitions	175
Admissions	8000
Auction	2500
Interest Income	5
Opportunity Quilt Tkt Sales	5000
Opp Quilt Ticket Sponsors	100
Pins	350
Raffle Baskets	750
Vendors	8000
Loan from Guild	3000
Money Boxes Cash	4000
Total Income	31,880
-- Expenses --	
Acquisitions	500
Auction	475
City License	75
Community Service / Education	50
Entrance / Admissions	100
Facilities	8500
Food	225
Hanging	200
Insurance	10
Miscellaneous	100
Opportunity Quilt 2012	650
Opportunity Quilt 2013	200
Opp Quilt Tickets	275
Pins	475
Pipe and Drape	2500
Programs	550
Publicity	1500
Raffle Baskets	75
Sales Tax	275
Security	650
Signs	200
Staffing	75
Vendors	200
White Glove	25
Loan from Guild - Repay	3000
Money Boxes Cash - Repay	4000
Total Expenses	24,885
Profit	6,995
Approved by Guild 6/21/11	

2012 Quilt Show

"Twist on Tradition"

Stephania Bommarito

So many wonderful details for the show have been happening over the past couple of months. Our show will be very rewarding because of all these activities. The **Opportunity Quilt** – Floral Fantasy – is totally stunning!!! Pam and her team have outdone themselves. Opportunity Quilt tickets are available from Nancy Jengo. The **quilt show pin** similarly is very striking. You will definitely want to have one for your collection.

I am confident everyone is busy creating quilts for the 2012 show. You will be able to submit quilts and garments on-line beginning in September. The **Quilt Show Challenge** this year is a take-off on the name of the show. There are only two rules. First, the design must be based on a quilt block that is at least 75+ years but have a 21st Century "twist" based on the "look" of quilts today. Secondly, the quilt must be no less than 12 inches or no more than 30 inches in any direction.

Auction quilts are an integral part of the success of our show. The summertime is a terrific time to take a break and create one. Ruby and Claudia are looking forward to accepting these quilts beginning at the August meeting.

Raffle baskets once again will be available at the show. Thus, we are asking your help to make them happen. We need both big baskets and "goodies" to fill them. The theme of a basket can be based on a wide variety of themes from coffee/tea chocolate-time to a color, occasion, or technique related to quilting. If a group of friends would like to get together and create one from your stashes that could be a possibility. Red Winter will be happy to accept any and all items. Plus, she would like to have a few fellow members to help her collect and assemble the baskets. Just let her know if you can.

I would like to thank EVERYONE who has volunteered to work at the Long Beach Quilt Festival at the end of July. I will send out a reminder as to the day and times. Our Opportunity Quilt will be on display Thursday and Sunday. Stop by the booth and enjoy its beauty while you are at the show.

No Quilt Show Meeting in July or August.♦♦

COMMUNITY SERVICE—Janet Akman 310-325-9663

Here we are ready to start another year. We have several ongoing projects that you may want to participate in. Mary Shadbourne will continue with the Comfort Quilts. Julie Maas will continue to accept Read Me A Quilts for CASA and Arlene Zobrist continues to ship patriotic quilts to military hospitals. See their individual articles in this newsletter and feel free to contact them or myself for further information.



St. Andrew's has an ongoing Food Pantry project which we are happy to support, so remember to bring your canned goods to the meeting each month. Also save your travel toiletries and turn them in to Mary or myself at the meetings.

For those of you who are new to the guild, WELCOME. Please come join us in our projects. Again you can contact me, or the project coordinator for further information. Happy Quilting

Mary Shadbourne

310-326-4953

Look for distribution results for 2010-2011 in the August newsletter. We're presently toting up the totals and gathering information from several sources. Following is a list of Community Services Special Projects from last year:

- "Comfort" quilt project (lap quilts and bedsized quilts), Mary Shadbourne
- Million Pillowcase project, Julie Limbach Jones
- Read Me A Quilt project, Julie Maas
- DCFS Backpacks project, Helen Carson
- Quilts for Our Wounded, Arlene Zobrist
- St. Andrews Pantry Project, Mary Shadbourne
- Toiletries collection and distribution project, Mary Shadbourne

We've been a busy bunch, haven't we? It's been a good year.

The Quilt Posse is forming and those who signed up will be informed of daytime work parties later in July. Remember, there are no nighttime sweatshops scheduled for the summer. ◇◇

Department of Child Services (DCS) Project

Helen Carson 310-532-5074

(helen_carson@pacbell.net)

I have thoroughly enjoyed coordinating this effort on behalf of the guild this past year. We want to thank everyone for their support of the "Emergency Placement Bags" (aka backpacks) project in recent months. After our June meeting, I was able to fill a large box with your donations of clothing, backpacks and personal care items. In addition, the SBQG generously donated 9 Target gift cards (\$25.00 each) for a total of \$225.00 from the Community Services budget. This will enable DCS Staff to purchase items as they are needed. Your support has made a difference in the lives of the children who are cared for through the Foster Care Program. THANK YOU!◇◇

Read Me a Quilt

This past month I received two bright cheerful Paddington Bear quilts made by Pat Bryan and a lovely quilt by Ruby Tabata. Thank you ladies.

I received a call a couple weeks ago from the CASA supervisor. She had a problem. The wonderful penguin quilt that Pam Overton made for Read Me a Quilt had found a good home. The quilt was still in the office when a former program member, a graduate from the program, saw it and fell in love with it. Penguins are her special love. This young lady is pregnant and wondered if she could have a penguin quilt for her baby. The CASAs are giving this gal a baby shower and asked if another quilt could be made so they could give this young lady a penguin quilt. I contacted Pam, asking her if she could make another one of those charming quilts. It became a group effort, Pam made the top, Sue Glass quilted it and Melanie Dreike bound it. This is fantastic. South Bay Quilter's Guild ladies are so giving. They have always come through when a special request has been made.

Thank you.

Julie Maas◇◇



Quilts for Wounded Warriors

Arlene Zobrist 310-543-5302



We received several inspiring thank you notes last month for the 15 quilts we sent to Afghanistan. Both Bagram and Bastion reported seeing lots of wounded and our quilts are often used the same day they arrive. Bastion had 6 critical patients the day they received our box of 5 quilts (wish it had been 6). The new Deputy Commander for Task Force Medical-East (60% of Afghanistan) in Bagram personally wrote to thank us. She helps present Purple Hearts and they had 12 one night alone. While we like to hear about our troops being scheduled for withdrawal, the reality is that currently the need for our quilts is very high.

One note pointed out the tough jobs and bravery of our female soldiers. Kelli wrote that her job is to coordinate all of the helicopters that go get our wounded soldiers. She is excited about going home shortly to her husband and 6 yr old stepdaughter, and wanted to thank us for what we do. We at home want to thank her for all her sacrifices.

I'm happy to report that another "Sister Guild" is joining us in making wounded warrior quilts. At the invitation of Surfside Quilt Guild in San Clemente, I spoke to them at their last meeting about our quilts going to combat hospitals, and they immediately formed a special group to support the project. Their group chair, Susie Russell, stays in touch with me and I look forward to working with them. Our thanks to this very active new Guild for sharing our interest, and for their hospitality during my visit.

Our own Guild member Pat Bryan made the lovely quilt shown above, showcasing some patriotic panels which our troops enjoy. Pat was also thoughtful in sending it to me to expedite it since our Guild is not meeting in July. Many thanks, Pat – your quilt is already on the way to Bastion to bring comfort to a wounded warrior. One medic wrote "Please let your team know they definitely have an incredible positive impact. They bring joy and comfort to both patients and staff." ♦♦

Requirements:

Size: 48" by 78" (stretcher size)

All cotton (including batting, 80/20 acceptable)

Appropriate patriotic theme/design

Optional: Pillowcase, 20"x30", coordinating fabric

Membership

Stephania Bommarito 310-503-7989 quiltwizard1024@aol.com

Nancy Payne 310-371-0827 napayne2@hotmail.com



At the June meeting, one of the two **Lifetime Membership Award** winners was announced. What a joy it was to honor Helen Cason for all of her years of service to our guild! The list of the many ways she has stepped up to serve the guild was remarkable. The South Bay Quilters Guild is truly blessed by all of Helen's hard work and attention to detail. However, there is still another person who has been just as instrumental serving our guild in so many ways too. We will reveal that member at our September guild meeting.

Membership Renewals Beginning with the August meeting, we will be accepting membership renewals for the 2011-2012 year. The membership form is available on line at the SBQG web site. Membership forms also will be available beginning at the August meeting. Once again, you can choose to receive your newsletter by either email or post mail. We look forward to greeting all returning members and new members beginning with the August meeting. ♦♦

SBQG 2011/2012 Budget

Income	
Membership	7,500
Newsletter-Advertising	450
Quilt Show Deposit Refund	1,000
Quilt Show Profit	6,995
Workshop Fees	4,500
Total Income	20,445
Expense	
Community Services	300
Fashion Show 2012	500
Guild Operations	
Advertising	50
Memorial Donations	300
Contributions - TUSD	240
Door prizes/Awards/Gifts	600
Dues/Fees	550
Equipment	800
Historian	50
Insurance	500
Refreshments	200
Miscellaneous	100
Postage/Delivery	25
Printing/Copies	25
Room Rental	1,925
Safe deposit box	95
Sales Tax	275
Storage Rental	2,000
Supplies	250
Website	325
Income	(1,300)
Guild Ops Total	7,010
Hospitality	150
Intra Guild	100
Membership	600
Newsletter	1,150
Philanthropy	tbd
Programs & Workshops	10,325
SCCQG Representative	150
Quilt Show Deposit	1,000
Reserve for Sales Tax	3,500
Total Expense	24,785
Net Income (Loss)	(4,340)

Approved at Guild 6/21/11

Intra-guild

Dorothea Evans and Tracy Finnell

Mystery Quilt – Wow, what a turn out for this project! We have 15 folks signed up currently and room for everyone else. It's not too late! Just drop Tracy Finnell an e-mail or phone message to get added to the list. This is a super fun project for all skill levels and all fabric colors. Straight piecing only. The first set of directions will be available at the August guild meeting. Fabric requirements are below in case you find something wonderful over the summer.

Fabric Requirements: *Light Background* – 3 yds; *Main Print* – 1 ¾ yds; *Accent Fabric* – 1 ¾ yds; *Optional Border* – 2 1/8 yds*; *Binding* – 1 yd*. *Border can be made using more of the main fabric. Accent fabric would make a good binding. You can also wait until the top is finished and use something completely different for the border and binding. Finished size is 51 X 68 before borders.

Summer Puzzle Challenge – Are you working on turning that puzzle into a really cool quilt? We'd love to see it in August or September.

UFO Challenge – Come and add your mystery or puzzle quilt to the book at our next meeting. Don't forget prizes at the end of this activity.

Alzheimer's Art Quilt initiative (AAQI) – We're still accepting quilts through the August meeting, so take a couple of hours to make a donation quilt. We only have 5 to send them. Please make sure to fill out a registration form for every quilt you turn in! We'll have them at the table in August and on the website in the Intraguild Section of Members Only. **Designs from patterns, books, magazines, web pages, etc. require permission of the copyright holder in writing and citation.**

Trivia Question – will return in August newsletter.◇◇

South Bay Quilters Guild
Fiscal Year End Report
July 1, 2010 through June 30, 2011

Income

Community Services	1,322.45
Fashion Show 2010	2,580.00
Guild Ops	4,085.98
Hospitality	1,322.00
Library	632.82
Membership	7,645.00
Newsletter	577.50
Philanthropy	160.93
Programs/Workshops	4,325.00
Travel	1,593.00
Quilt Show Profit	<u>9,760.06</u>
Total Income	34,004.74

Expense

Community Services	1,399.02
Fashion Show 2010	3,037.35
Fashion Show 2011	500.00
Guild Ops	6,177.45
Hospitality	1,345.29
Intraguild	50.01
Library	637.13
Membership	611.71
Newsletter	1,083.74
Philanthropy	5,000.00
Programs/Workshops	7,726.06
SCCQG Rep	112.00
Travel	<u>1,340.32</u>
Total Expense	<u>29,020.08</u>

Net Income

Ending Balances	
BoW Checking	32,112.71
BoW CD	5,817.27
CapitalSource CD	<u>11,757.54</u>
Total	49,687.52

May Salm, July 3, 2011



**Happy
 July
 Birthdays!**

Naomi Ann "Nicki Gold	7/3
Nadine Kirk	7/3
Lois Grover	7/10
Carol Berg	7/11
Mary Meadows	7/12
Mary Shadbourne	7/15
June Stewart	7/15
Helen Carson	7/15
Bonnie Hutchins	7/16
Anita Rising	7/16
Mary Howland	7/19
Dorothy Brown	7/21
Barbara Beer	7/21
Karen Yarrow	7/26

Quilt Show 2012

Totals to Date as of 6/30/2011

Income	
Interest	
Income	<u>0.78</u>
Total Income	0.78
Expense	
Opp Quilt	
Supplies	<u>605.84</u>
Total Expense	<u>605.84</u>
Net Income	<u>-605.06</u>

Fashion Show 2011

Lois Grover 310-679-6509

A Touch of Whimsey

Sunday October 9, 12:00 P.M.

Community Room Fort MacArthur in San Pedro

Cynthia Catlin, our guest speaker for this year's show, started sewing at the early age of 13 and sewed all through high school. She began with basic clothing construction and created occasional outfits to wear as a fashion statement. She quickly became very proficient in designing garments and began to deviate from the standard pattern by adding extras and embellishments to jazz things up. She has a gift for mixing vibrant colors and a variety of fabrics to achieve a sophisticated collection of wearable art. Over the past 40 years of designing garments, quilts and accessories, she has successfully been published in numerous books and has shown her work in various galleries, museums and venues from coast to coast. Here is a tasty treat of what to expect:



Tickets for the Fashion Show will be available at the Fashion Show Table beginning with the August Guild Meeting. The price this year is \$34.00 per person and will include a hot buffet lunch. You will have only two guild meetings to purchase your tickets. We must turn in; our final number of guest to Fort MacArthur 10 days before the Fashion Show, so please get tickets for yourself and your guests as soon as possible.

The Fashion Show Entry Forms are now available on our guild web site. They will also be available at the check-in table and the Fashion Show Table at our guild meetings. You will need one form for each entry whether it is a garment, accessor or jewelry. This is the perfect opportunity to show us your talents at making jackets, vests, handbags, scarves, belts etc. We want to have a bit of fun and your input will help us have a more successful show.

Centerpieces Needed – We need centerpieces capable of holding fresh flowers. In keeping with our theme of a Touch of Whimsey I have contributions of an ice cream cone, a birdhouse and a popcorn box. We will need about twelve centerpieces and if you have a container you wish to donate bring it to the next guild meeting. The centerpieces will be one of our beautiful door prizes.

Door Prize Donations – Donations are being accepted for door prizes. We ask for new or gently used items. It would be fun if you would use your imagination and wrap them with a Touch of Whimsey. (If you need an idea ask at the ticket table or a committee member.) ♦♦



**NINA'S
QUILT BARN**

2302 ARTESIA BLVD.
REDONDO BEACH CA 90278
Phone 310-374-7222



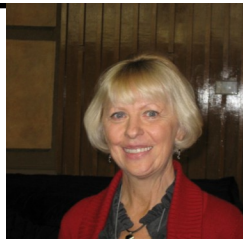
Eleanor Johnson
Longarm Machine Quilting

QUILTING
by MISS E

eleanorejohnson@aol.com

1512 Aviation Blvd. Redondo Beach, CA 90278 310.408.9315

Thanks to Everyone



To the SBQG members~

I want to express my sincere appreciation to the members of the guild for my "Lifetime Membership". There are many members who qualify for this honor and I was humbled to be considered, let alone chosen. I couldn't believe the timing, as June was my last guild meeting. I had mixed emotions about coming, as there is much packing to do in the next few weeks. My husband, Bruce, and I are building a home and retiring in Latrobe, Pennsylvania near my family. We have chosen to return to my home town. I have enjoyed being in the guild the past thirty years and will continue to participate from the East Coast. I thank each and every one of you for your many years of friendship and your quilting inspiration, as I believe people walk into our lives and leave a lasting impression. Know that I take these memories with me. Thank you.

Warmest Regards~ Helen Carson ◇◇

Toberman Neighborhood Center



A most sincere thank you to the whole Guild for "green dotting" Toberman Neighborhood Center in sufficient numbers for it to receive a check for \$2000. I personally delivered the check to the Director of Development, Kristy Day, and she jubilantly rushed out to the main desk and rung the "money bell" at which time everyone came out of their offices to celebrate. All of us who love Toberman are so grateful. Be assured it will be put to good use. Thank you, thank you.

Rosemary Zettler



The Quilted Rose
Authorized Gammill Dealer



Free Introduction to Machine Quilting Class

This class is for the quilter thinking about purchasing a Gammill Quilting Machine for a business venture or for personal use. Your class will cover attaching a quilt to the machine, stitching from the front and back of the machine, an overview of supplies recommended for starting a business and recommended suppliers. *We furnish all supplies for this class.*

We schedule this class around you, our customer. Call us for an appointment that will fit your schedule. Gammill Vision classes and Statler Stitcher classes run around 3 hours each.

Used machines for sale.

If you need help selling your used machine call us for information on our used machine sales program.



When you purchase from The Quilted Rose you will be entitled to the following classes & thread to get your business going:

Statler Stitcher Purchase: 4 Days of Classes & \$500.00 in thread
Vision Purchase: 3 Days of Classes & \$500.00 in thread
Vision Premier Purchase: 2 Days of Classes & \$250.00 in thread

The Quilted Rose website has our current Newsletter, Business Plan, Gammill Specials, and Gammill pricing.


Hours:
Mon. - Fri.
9am - 4pm
Saturday:
10am - 2pm



The Quilted Rose
7151 El Cajon Blvd. Suite O ♦ San Diego, CA 92115
PH: 800-660-8282
Web: www.thequiltedrose.com ♦ Email: thequilted@aol.com

Sunshine

Claudia Gomez is a semifinalist for the 2011 AQS Quilt Show and Contest, September 28—October 1, 2011 at the Iowa Events Center. Claudia has been chosen to display the quilt, Ikebana: King Protea and Quince, along with 230 others in the annual contest. ◇◇





DreamMaker Quilts
Memory Quilts & Machine Quilting

Dotty Allison

310.322.0535
310.529.6142 Cell

El Segundo, CA
WillQt4U@aol.com

AAA Sewing & Vacuum Center

3770 Sepulveda Blvd.
Torrance, CA 90505

- QUILT FABRIC
- MACHINE SALES
- SEWING CABINETS
- QUILT FRAMES
- EMBROIDERY SUPPLIES
- SERVICE & REPAIRS
- CLASSES & EVENTS
- SCISSOR SHARPENING



(310) 791-1190 • www.aaasewingandvacuum.com
at the corner of Hawthorne & Sepulveda

The Traveling Quilters

P.O. Box 3214, Manhattan Beach, CA 90266

A Tour Service for Quilters!

2011 -

9 September - Hoffman International and Quilt Shop Hopping

15-18 September - Temecula Quilt-Away Retreat

30 Oct - 5 November - Houston International Quilt Festival . . . and more of Texas! Limited availability. Contact us ASAP if you're interested!

Would you like to be on our mailing list? Just drop us a note at the address above, or e-mail: pam@travelingquilters.com



Linda's Quilting Studio

Professional Longarm Machine Quilting

San Pedro, CA
Call For Appt.

Linda Crane
310 833-4141



Luella's Quilt Basket

A Day with Sue and Herb

featuring

Sue Hausmann

Host of the popular public TV series,

America Sews

and

Herb Hausmann

her CEO (Carry Everything Out)

Wednesday, November 30, 10am-4pm

Cost is only \$40, including lunch

Luella's Quilt Basket

1512 Aviation Blvd.

Redondo Beach, CA 90278

310-798-1282

www.luellas.com



Find us on
Facebook

The guild is on **FACEBOOK**
and **Twitter!**

Users can access the Facebook link and Twitter link from our home page.

Upcoming Events

July 29-31 Long Beach International Quilt Festival

Hours

July 28: 5-9 p.m. (Preview Night); July 29 & 30: 10 a.m.-7 p.m.

July 31: 10 a.m.-3 p.m.

Ticket prices: \$10 daily adult/\$8 senior & student/Children 10 and under free with paying adult; \$10 Preview Night (includes one free additional day)

\$25 Full Show Pass (includes Preview Night)

Advance online printable tickets available now.

August 13 QUILTING BY THE SEA – A FOCUS ON QUILTS

Join us for a wonderful day of quilts, crafts and camaraderie!

The show will be at First United Methodist Church, Simkins Hall and Fireside Room, 1008 11th St. Santa Monica, CA 90403, 9:00 A.M. – 5:00 P.M. Admission is \$5.00 with free parking in the lot across the street. Featured quilter will be Nadine Kirk. *Email*

Contact: kennaleem@aol.com

Website: santamonicaquiltguild.org

September 26

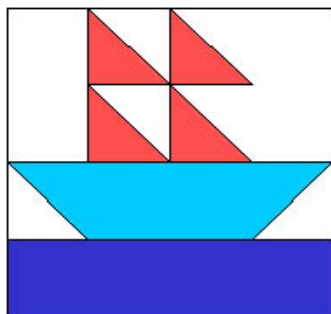
Westside Quilters is very pleased to announce a very special event, "**An Evening With Kaffe Fassett**". Come hear him in person discuss "A Colorful Life" Monday evening, September 26 at 7:00pm Westwood. Free parking next door beneath Belmont Village Tickets \$25.00. Tickets will be for sale beginning July 15th only on the Westside Quilters Website at www.WestsideQuiltersLosAngeles.org and will be mailed to purchasers in Mid August

United Methodist Church

10497 Wilshire Blvd. Los Angeles CA 90024

Wilshire Blvd. and Warner Avenue

For more information contact WestsideQuilters@Yahoo.com



South Bay Quilters Guild

P.O. Box 6115

Torrance, CA 90504

Guild Meeting:

No Meeting in July!

Reminders:

Wear your Name Tag

Invite a friend to the meeting

