

South Bay Quilters Guild

Volume XXXII, No. 8 Established 1979

February 2011

President's Corner

Pam Overton

Is it just me or is time flying faster and faster? It's February and time for our annual quilt show. Our quilt show chair, Jean Newton, and her committee have planned well and quilt show set up is just around the corner. It takes each and every one of us to help set up, operate, and take down the quilt show. As you know, the quilt show is our primary fund raiser for the year. But of equal importance is that fact that this is our opportunity to show the community what we do as quilters - from our own individual efforts for family and friends to our many endeavors for community outreach. I do hope you'll invite family and friends to come enjoy the show!

Are you an SBQG member with a quilt related business? Perhaps you would like to advertise your business in the guild newsletter? If so, please contact Carol Berg, our newsletter editor.

We've welcomed a number of new members in the last few months and we want to make them feel welcome at SBQG. With that in mind, we are planning a New Members Tea. Details will follow in the coming months, but we want to encourage you to "save the date" - Sunday, April 10. New members will receive an invitation to the event, but any and all members are welcome to attend. So mark your calendars . . . it's always a fun afternoon. See you at the meeting . . .

Pam♦♦

Guild Programs

Carolle Schuegraf

310.265.9796

It's time for us to go back to school – SBQG Quilt College that is! at our February Meeting.

We hope you'll join us for this fun-filled and informative evening. Have you ever attended Sunday Sampler at Houston or Roundabout at Road to California? SBQG Quilt College is our abbreviated version of those activities.

Four of our very own talented SBQG members have stepped up to become "quilt professors" for the evening and show us some fun techniques and tools. Quilt College will consist of four 13-minute demonstrations with 5 minute shuffle breaks between each demonstration. You will receive a "textbook folder" containing instructional sheets for each of the demonstrations and paper for note taking. You will have an opportunity to observe the techniques and tools that our instructors use, take notes or perhaps try your hand at the technique. Remember to bring a pen or pencil.

How will this work? As you sign in at the membership table, please pick up your "textbook folder". The color of the folder determines your starting demonstration location. If you're attending the meeting with friends and want to stay together, please pick up the same color folder. We'll have the demonstration tables color coded and numbered. Once we're all situated at our beginning demonstrations stations we'll move clockwise around the room.

Sounds simple . . . let's see what happens! Whatever happens, I'm sure the evening will be fast paced, probably a little chaotic, but a lot of fun!

♦♦

Refreshments

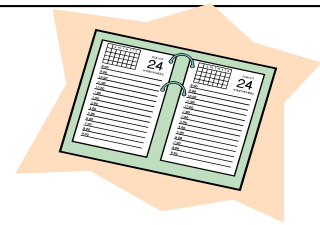
At our February Guild meeting—if your last name begins with “E” or “F” or “G”, please bring a dish to share with 15 or 20 people. Also consider bring water, because **water will no longer be furnished by the guild.**



Thank You, June Stewart ♦♦



Guild Calendar



Feb 8	Community Service at Hamilton (see page 5 for details).
Feb 8	Quilt Show Committee Meeting at Hamilton School, Room 20 at 7:00 P.M.
Feb 15	Guild Meeting at St. Andrew's Presbyterian Church, 301 Avenue D, Redondo Beach doors open at 6:00, meeting begins at 6:30 P.M.
Feb 15	Bring canned goods for St Andrews to the Guild Meeting. Please, do not bring any glass! This month bring canned meats and/or canned fruit.
Feb 25	Newsletter Deadline! Please send all newsletter articles to Carol Berg grmaschr2@yahoo.com
Mar 1	Guild Board meeting at Coco's in Manhattan Village Mall. Business meeting begins at 6:30pm. All members are welcome!

Workshops

Claudia Gomez

cdgdesign@verizon.net



Hi Everyone,

We had a great turnout for our two January Workshops with Jill Schumacher. Please bring your beautiful machine quilted Ohio Stars and Mini Wholecloth quilts to “Show & Tell” at our February meeting.

And Save the Date...

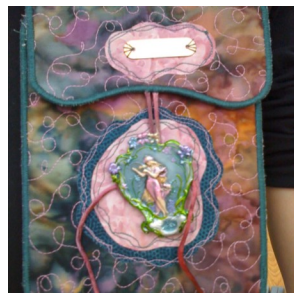
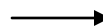
Wednesday, April 20, 2011

Jake Finch will be teaching her colorful and chic hanging wallet.



Wednesday, May 11, 2011

Jan Hirth will teach a class in appliqué .



2011 Quilt Show

Jean Newton 310-515-3929

Saturday, February 19th (hours 10:00 A.M.—5:00 P.M.)

Sunday, February 20th (hours 10:00 A.M.—4:00 P.M.)

Quilt Show Miniature Auction - We received 17 more quilts at our January meeting. Thank you so very much! Those of you who have an auction quilt in progress or plan to make one could we **PLEASE receive it BEFORE the February meeting?** The meeting is only four days before we need to hang the quilts and have all the info typed and ready. Call either Julie or I and the closest one will pick it up. Remember the quilts should not exceed 36" on any side. A quilt can not be accepted without a completed entry form. For your convenience, entry forms are in the Form Section of our webpage. Also, a sleeve on the quilt would be nice for the person purchasing it. We appreciate all your hard work in the wonderful quilts we will be selling at our auction.

Julie LimbachJones 310/372-3889

Nancy Jengo 310/378-5523

Gift Basket Raffle - Thank you to all who have contributed to the Gift Basket Raffle. Pat is now assembling the baskets for presentation at the show. No contributions will be taken at the February meeting.

Pat Pascal 310-546-1906

Acquisitions - Some of us still have things to do before we hand in our quilts for the quilt show. Make sure that you have a 4 inch sleeve on your quilt. For large quilts, please place a break in the sleeve every 24 inches.

The Acquisition Committee will be selling sleeves by the inch at the February guild meeting.

If you are having your quilt judged, you need to turn your quilts in at the February meeting.

Everyone else will need to bring your quilts to Torrance Cultural Arts Center on Friday, February 18 between 4:30 and 5:30pm.

Melanie Dreike 310-214-2806

Pam Overton 310-546-5990

Carol Thomas 310-272-7780

Staffing—When you arrive at the quilt show to do your scheduled stint, you will need to check in with the Staffing Committee. Check in will be in the Garden Room. The Garden Room is located directly across the courtyard from the entrance to the quilt show. There will be signs.

JoAnn Cope 310-316-1166

Sheila Franklin 310-644-6760

Julie Mass 562-426-

4231

Quilt Show Pins - See Diane Miller if you wish to get your 2011 Quilt Show early. Pins are \$5.00 each or free if you donate a quilt for the silent auction.

Diane Miller 310-831-3872

Opportunity Quilt and Sewing Machine Tickets - If you need additional tickets, Vivian still has them. You can also turn in any money and stubs at the February meeting and have one less thing to think about the weekend of the show.

Vivian Ruddy 310-548-3229

Committee—The next meeting will be held on Tuesday, February 8 at Hamilton School, Room 8 at 7:00pm. See you there! ♦♦

QUILT SHOW
FEBRUARY 19-20
TORRANCE CIVIC
CENTER
TORRANCE BLVD. &
MADRONA, NE CORNER

Library

Dawn Cynamon

DawnCynamon@gmail.com

Library Use

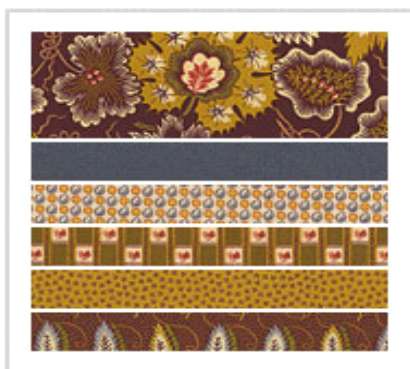
All members are invited to use the guild's extensive collection housed at Luella's Quilt Basket. Inside the store it is located across from Eleanor Johnson's Longarm Machine Quilting services. Check-in and return instructions are posted.

If you ever want to know if we have a book on a specific technique, style, block, motif, skill, title, or author let me know and I'll do a search for you.

In This Month's Raffle

Reproduction Fabric Medley

Twenty seven 1/2 & 1/4 yd cuts



Hand Dyed Silk Scarf

Compliments of Claudia Gomez



The Step-by-Step Needlecraft Encyclopedia



SBQG Book Sale

March 2011 Guild Meeting

We have collected enough books for our March book sale and we will NOT be accepting any more books.

Trivia question is: What quilt pattern commemorates the founding of New Orleans?

Our sale will be held at our March Guild meeting beginning at 6:15 p.m., (earlier if we can get set up) before the meeting and at the break. We have many wonderful books for you to look through. Be sure to bring a sack to take home your purchases. We will accept cash or check at the sale. If you would like to help us set up that evening, please call Sue Glass or Susan Gibbs. We can use your help! ♦♦

Sunshine and Shadows

Many members will remember Rosie Dahlin a member for many years. Rosie, age 79, died on Sunday, January 30, 2011 after a long battle with cancer. She will be buried in Elliot, Iowa. If you would like to send a card mail to:

Melody (Bert) Bivens and
Pamela Johnston (her daughters)
18903 Patronella Avenue
Torrance, CA 90504.

COMMUNITY SERVICE

Mary Shadbourne

310-326-4953

Please join us at our monthly "Sweatshop," February 8, 2011 (the second Tuesday of the month). We convene at 7pm, this time in Room 12 at Hamilton Adult School, 2606 West 182nd Street, Torrance. Bring scissors and/or a sewing machine (perhaps a pointy chopstick). We like to sandwich about eighty quilts at this monthly event and as usual, we'd love your help.

Daytime "work parties" will be resuming a little later in the year. Let me know if you want to be included in work party notifications. They're held different days of the week, but always from 10 to 12. These get-togethers are casual and low key, and we often have lunch afterward at a nearby restaurant, optional of course. If evenings and after darks do not appeal to you, or if you don't work during the day, then a work party might be the just the thing for you. Call me: 310.326.4953.

Julie Limbach-Jones is collecting used (but serviceable) jeans for a one-time donation to a fundraiser to benefit AIDS. If you have jeans to donate, bring them to the guild meeting and Julie will pass them on. She will not be able to accept donations after the February meeting.

Here is a sample note from Trinity Kids Care Hospice: "Thank you so much for the adorable quilts! They are truly a precious gift to mothers who are facing losing their child. One mother told me she would frame the quilt when the child passes away, which will be soon. Thank you for touching the lives of so many."

Reminders: (1) St. Andrews Pantry Project continues with the same need for canned meat and fruit. (2) Julie Limbach Jones would be glad to put your pillowcase(s) into the count for the Million Pillowcase Project. (3) Please consider taking home a small box of fabric to process as you wish. Remember, there is no deadline for the return of this fabric. ♦♦



Department of Child Services (DCS) Project

Helen Carson 310-532-5074 (helen_carson@pacbell.net)

We want to thank everyone for their generous support of the "Emergency Placement Bags" project the past few months. The first two months we had a great response and we want to express our appreciation to each and every one of you for your generous donations. As a result, we were able to fill two 18" x 18" boxes of supplies for November and two 18" x 18" boxes for December. In January, our donations were down and not enough to fill one box. I will be combining the January and February's donations and hopefully we can fill the rest of the box. A gift card is a good alternative, if you don't know what to buy. ALL donations are welcome at any time. The need for this project is never ending and your help is greatly appreciated. When a child is placed in a foster home, it's our hope to have them take along with them a new backpack filled with new clothes and the "basics" plus a toy or two. If you have any questions, don't hesitate to contact me. ♦♦

Read me a Quilt

I'm really going to be sorry once all of the Dr. Seuss quilts have been made and turned in. I've had so much fun looking at all of them. This past month all of the quilts turned in were Dr. Seuss quilts. Thank you Diana Smith, Melanie Dreike, Pat Bryan and June Stewart. When I have been in fabric shops recently I have seen other fabrics that tie in to children's books. If you have a problem finding a book that goes with a quilt, you can utilize some of these other children's prints. There are children in the program from infancy through teen age years. All of them are needy. Whatever you come up with will be wonderful and appreciated.

All of the feedback that I have received from CASA has been very positive. Please visit the CASA table at the quilt show and you can read what the advocates and the children have said about the quilts and how meaningful they have been. Thank you ladies.

Julie Maas♦♦



Quilts for Wounded Warriors

Arlene Zobrist 310-543-5302

When I begin planning this article each month, I often get a new email or Thank You note that helps me keep you current.

This month I got both: an email from Iraq last week and a Thank You note from Afghanistan came in the mail yesterday. The email from Iraq said they are almost out of quilts and need more – they save them for special presentations and give them to Purple Heart and Medal of Honor recipients. The Thank You note was from a Marine in Southern Afghanistan who said “the fact it was a handmade quilt really gave me comfort . . . and a feel of home.”

The quilt shown here was designed and made by a Blue Star Mother (an Army Mom) who made two lovely quilts, despite the holiday rush. This pattern is a good way to use up small strips of fabric. Please keep the warrior quilts coming since the need has not slowed down and I’m getting more special requests as word spreads in the combat areas, and your quilts are so meaningful to our injured troops. ◇◇

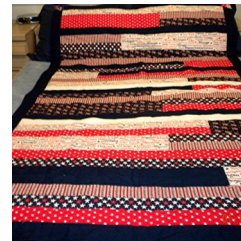
Requirements:

Size: 48” by 78” (stretcher size)

All cotton (including batting, 80/20 acceptable)

Appropriate patriotic theme/design

Optional: Pillowcase, 20”x30”, coordinating fabric



Membership

Stephania Bommarito 310-503-7989 quiltwizard1024@aol.com

Nancy Payne 310-371-0827 napayne2@hotmail.com



New Members

It was a busy moment at the membership table last month! It was fun greeting everyone. We not only had many members come but also 12 guests. In addition, we welcomed two new members. They are Peggie Wormington and Berta DeLeon. Be sure to reach out and greet our new members and anyone you see with a guest badge. Each person in our guild is a delightful person and is a joy to know!

Name Badges and Membership Booklets

We still have some name badges and membership booklets that need to be picked up. Stop by our table and we will be glad to give them to you.

Door Prize

Our February door prize will be a \$10.00 gift certificate for AAA Sewing Center.

We look forward to seeing you at the meeting.

Nancy and Stephanina ◇◇

Quilter's Marketplace

By Carol Thomas

Quilter's Marketplace is off and running. We have a new name "**Quilting Treasures, New to You**". The tentative date is Sunday, May 15, 2011. We think we've nailed down the location, but stay tuned for final details. We will be joined in this venture by the Santa Monica Quilt Guild. So please start bringing in those cotton fabrics, books, patterns, orphan blocks, new or gently used tools, etc. They all deserve a new home. Please make sure all fabric is washed and labeled with the size and that everything is in good condition. We'll be collecting at the February meeting.

If you would like to help out or have any questions, please call Carol Thomas 310-372-7780.◇◇

Lawndale Historical Society is having a small quilt display along with their Founder's Day display on February 26, 2011 from 2:00 P.M. until 4:00 P.M at 14616 ½ Grevillea Avenue, Lawndale, CA 90260. If you have a quilt you would like to display please bring it that day by 1:30 P.M. Please make a card with some information on the quilt/s.

Contact: Charmaine Doty 310-644-8390. ◇◇



Intra-Guild

Dorothea Evans and Tracy Finnell

Yo-Yo Guess – We had some participation last month, but I commonly heard I forgot my squares. The guessing continues this month, so you have another chance. Go now to cut your charm squares (5"), then put them with your name tag. Now you'll have them for the meeting. Remember 1 guess per square.

Heart Baskets – This is a very cute no-sew project that we think you'll enjoy. Come to Quilter's College in February and Dottie Daybell will show you how to make them. You'll get to show off your new skill when we make and exchange them in May. More details to come.

Secret Pal – This activity is very similar to Secret Santa without all the stress of the holiday season. There is a "Secret Pal" information sheet on the website under the Members Only section. Please fill it out and bring 2 copies to either the Feb or March meetings. We'll have extra copies at the meetings. We will have the name exchange at the March meeting. Do it now and put it with those charm squares you're cutting.

UFO Challenge – Stop by our table to update or fill out a new log for the UFO Challenge. This activity is designed to help you become aware of your incomplete projects and to encourage you to get some done.

Trivia Question - Did you find it? Write the answers down. Put them with your squares and "Secret Pal" info sheet. Now everything is ready for the meeting.◇◇

Quilt Show 2011	
Totals to date as of 1/28/2011	
	<u>Totals to date</u>
Income	
Acquisitions Income	140.00
Interest Income	3.45
Opp Quilt Tkt Sponsors	50.00
Opportunity Quilt Ticket Sales	2,591.00
Pins	140.00
Sewing Machine Ticket Sales	1,099.00
Vendors	<u>6,330.00</u>
Total Income	10,353.45
Expense	
2011 Opportunity Quilt	378.54
Acquisitions	228.50
City License	74.00
Entrance	127.59
Facilities	7,794.37
Insurance for Quilt Show	10.00
Misc expense	57.39
Opp Quilt Tickets	238.21
Pins Expense	455.23
Pipe & drape	2,500.00
Publicity	1,374.50
Security	621.00
Sewing machine tkts - expenses	132.70
Vendor expenses	<u>25.00</u>
Total Expense	14,017.03
Net Income (Loss)	<u>-3,663.58</u>
Checking Balance	2,836.92

Fashion Show 2011

Lois Grover 310-679-6509

A TOUCH OF WHIMSEY is the theme chosen for our 2011 Fashion Show. A logo is being designed and we want to highlight fashion accessories, have a sit down luncheon and definitely have fresh flowers in our centerpieces.

The committee is continuing the process of finding a venue, speaker, deciding on a date, etc. We will let you know when more information becomes available.

This is an event that will give new members an opportunity to share their talents. It is important to have your input so we can have a successful show. The next committee meeting is on February 12 at 10:00 A.M. at Coco's on Hawthorne Blvd. at Carson St. The address is 21815 Hawthorne Blvd., Torrance, CA.

Please give me a call, if you can join us!!

Lois Grover ♦♦

Quilt is by Jan Hirth, see Workshops on page 2.



SBQG TREASURER'S REPORT for January 2011

Income

Guild Ops		
	Amazon	29.75
	Interest	-
	Holiday Dinner	422.00
	Library	37.00
	Newsletter (Advertising)	280.00
	Travel	220.00
	Total	<u>988.75</u>
	Income	

Expense

Guild Ops		
	Dues/Fees	72.00
	Room rental	125.00
	Website	203.84
	Library	165.58
	Membership	58.50
	Newsletter	91.87
	Programs/Workshops	1,250.00
	SCCQG Rep	112.00
	Travel	288.32
	Total	<u>2,367.11</u>
	Expenses	

Net Income (Loss) (1,378.36)

Ending Balances

Checking-Bank of the West	26,230.49
CD-Bank of the West	5,800.13
CD-CapitalSource Bank	<u>11,716.80</u>
Total	<u>43,747.42</u>

Balance in Special Accounts

Community Services donations	1,307.45
Library	47.42



Happy
February
Birthdays!

William B "Bill"	Jones	2/3
LaVerne	Owen-Barakat	2/6
Mary Ann	Santos	2/8
Ethie	Wilson	2/13
Linda	Chow	2/14
Red	Winter	2/15
Ann	Short	2/18
Alexandra	Tsubota	2/18
Pat	Hollarn	2/20
Nancy	Payne	2/20
Rita	Wagstaff	2/22
Betty	Keller	2/25
Yone	Sakamaki	2/28

2012 Quilt Show

The pieced kits will be available at the February meeting (we could use a few more) and we will happily accept your completed blocks. Thank you to those of you who have already picked up kits to work on. We're also looking for appliquéers and embroiderers to help complete the appliqué strips. In looking at the appliqué and blocks that have been turned in to date, it's easy to see that this will be a stunning quilt!

◇◇

Patchwork Star Reporter

LaVerne Owen-Barakat

In February we are privileged to feature long time member Helen Carson who joined the guild in 1981. Happy 30th Anniversary to her. Helen has served as President (two 2-year terms); Vice-President twice; Fashion Show Chair (three times); Quilt Show Chair twice; Membership Chair; Newsletter Editor; Recording Secretary (a couple times); Community Services; Intra-Guild Coordinator; Workshop Co-Chair; Parliamentarian and Guild Facilities Coordinator.

Helen began sewing under the watchful eye of her mother when she was 17. Both grandmothers and mother were quilt makers. The first garment she made was a skirt but didn't take Home Economics in school. Her "favorite" style of quilting is traditional pieced and traditional appliquéd. She loves many patterns and really doesn't have a "favorite". Margaret Miller is her most inspiring teacher.

Born in the "best neighborhood" Latrobe, Pennsylvania (also Mr. Rogers' birthplace), she and her husband Bruce, still visit a couple of times a year. She retired from Southern California Gas Co. This year, she and Bruce celebrate 40 years of marriage. Another congratulations!

Helen has many hobbies including knitting, hand embroidery, gardening, and listening to books on tape. She downloads books to her nano and is able to listen to a book and do handwork as well. That explains some of her efficiency and productivity. Since she retired, she has been very active in her city. Ten years ago, she was appointed by the City Council in Gardena to serve as a Senior Citizen's Commissioner. She serves as an advocate for seniors in her community. In addition, she delivers Meals on Wheels once a week, is President of the Top Notch Seniors Volunteer Club, Chair of the Gardena Senior Services Advisory Committee, Secretary of the Affiliated Committee on Aging Forum, Secretary of the "Meals on Wheels" Volunteers and serves as a member of the Chief of Police's Civilian Advisory Panel. She and her husband are the Coordinators of their Neighborhood Watch and are both trained as C.E.R.T. members (Community Emergency Response Training) and have current CPR and First Aid certifications. ♦♦

 **The Quilted Rose**
Authorized Gammill Dealer 

Free Introduction to Machine Quilting Class

This class is for the quilter thinking about purchasing a Gammill Quilting Machine for a business venture or for personal use. Your class will cover attaching a quilt to the machine, stitching from the front and back of the machine, an overview of supplies recommended for starting a business and recommended suppliers. *We furnish all supplies for this class.*

We schedule this class around you, our customer. Call us for an appointment that will fit your schedule. Gammill Vision classes and Statler Stitcher classes run around 3 hours each.



Used machines for sale.

If you need help selling your used machine call us for information on our used machine sales program.

When you purchase from The Quilted Rose you will be entitled to the following classes & thread to get your business going:

Statler Stitcher Purchase: 4 Days of Classes & \$500.00 in thread

Vision Purchase: 3 Days of Classes & \$500.00 in thread

Vision Premier Purchase: 2 Days of Classes & \$250.00 in thread

The Quilted Rose website has our current Newsletter, Business Plan, Gammill Specials, and Gammill pricing.



Hours:
Mon. - Fri.
9am - 4pm
Saturday:
10am - 2pm

 **The Quilted Rose** 
7151 El Cajon Blvd. Suite O ♦ San Diego, CA 92115
PH: 800-660-8282
Web: www.thequiltedrose.com ♦ Email: thequilted@aol.com

Eleanor Johnson
Longarm Machine Quilting
QUILTING
by MISS E
eleanorejohnson@aol.com
1512 Aviation Blvd. Redondo Beach, CA 90278 310.408.9315

AAA Sewing & Vacuum Center proudly presents EMBROIDERY BASH



Eileen Roche (founder and editor of *Designs in Machine Embroidery* magazine) and her sister, Marie Zinno, are coming to **Torrance** for an exclusive engagement in March. Their event is a jammed-full-o-fun 2-day event for the machine embroidery lover, or for those interested in getting into the machine embroidery craze.

Registration is only \$125, including:

- 55 Fabulous Embroidery Techniques
- Embroidery machines, project kits, and all supplies provided - you just show up!
- Each guest receives an Exclusive CD with all Embroidery Designs and project instructions used during the event
- Book signing and photo opportunities
- Catered lunch for both days included
- Exclusive offers, prizes, and more!

Friday & Saturday, March 4 & 5 (9am - 5pm)

2-day hands-on Interactive Workshop

RSVP (310) 791-1190

Advance registration is required

Limited enrollment available - call today!



Linda's Quilting Studio
Professional Longarm Machine Quilting

San Pedro, CA Linda Crane
Call For Appt. 310 833-4141



Raylene Christmas
310-704-7312
Long Arm Quilting
Hand-Made Quilts

The Traveling Quilters

P.O. Box 3214, Manhattan Beach, CA 90266

A Tour Service for Quilters!

2011 -

24-27 February - Temecula Quilt-Away Retreat

29 April-1 May - Seven Sisters Quilt Show, San Luis Obispo

21 May - Mystery Trip

9 September - Hoffman International and Quilt Shop Hopping

15-18 September - Temecula Quilt-Away Retreat

30 Oct - 5 November - Houston International Quilt Festival . . . and more of Texas! Taking names for the waitlist.

Would you like to be on our mailing list? Just drop us a note at the address above, or e-mail: pam@travelingquilters.com



Luella's Quilt Basket

says the

South Bay Quilters Guild

is

"Twice as Nice"

as other guilds ;-)

Here's to a fabulous show!

Thank you for including us in your vendor mall!

Luella's Quilt Basket

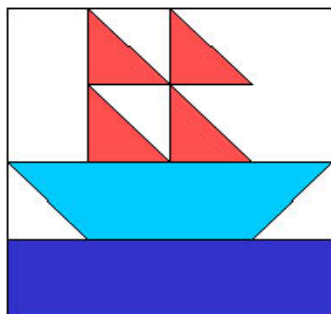
1512 Aviation Blvd.

Redondo Beach, CA 90278

310-798-1282

www.luellas.com

<h2>Upcoming Events</h2>	
February 9	<p><u>Glendale Quilt Guild</u> Earlene Fowler Author of State Fair, is speaking to the guild on Wednesday Feb 9, 2011 at the Glendale Public Library at 222 W Harvard, Glendale,ca. Bring your books to have signed, meeting at 6:30 p.m. <i>Email Contact:</i> cgurney@att.net <i>Website:</i> www.glendalequiltguild.org</p>
February 11-12	<p><u>Valley Quilters</u> Valley Quilters 31st Annual Quilt Show February 11 & 12, 2011 - 10am to 4pm Valley-Wide Recreation Center 901 West Esplanade - San Jacinto California 92583 Over 100 quilts - vendors -drawings-boutique-quilt appraiser <i>Email Contact:</i> dbhseng@yahoo.com <i>Website:</i> valleyquilters.org</p>
February 14	<p>The Hemet Show (held in San Jacinto) is really a good show. Lots of handwork, applique and really good quilting. February 14 & 15, Valley Wide Recreational Center, San Jacinto, CA. Come up the 15 take the 215 split north, exit Newport, turn right on Newport. It becomes Dominigoni. Lovely road. Exit Sanderson. (left) Take Sanderson across Florida to Esplanade. Turn right. Criss Kirby and Lyon and you will see Valley Wide on your left just after you crest a small rise. Turn in the second driveway - big parking lot and you have found the show. Mapquest will probably tell you to come up State Street. But it has a stop sign almost every block after Stetson.</p>
February 26	<p>The San Diego People of Color Quilt Guild's 2011 Quilt Show is schedule for February 26, 2011. This year's theme is "All About Me." Time: 10 AM - 4 PM on Saturday Location: Malcolm X Library, 5418 Market Street, San Diego, CA Admission and Parking are Free. San Diego People of Color Quilt Guild San Diego, CA http://easysite.com/sdpoc SDPOCGuild@gmail.com</p>



South Bay Quilters Guild
 P.O. Box 6115
 Torrance, CA 90504

Guild Meeting:

February 15 at 7:00 p.m.

St. Andrews Presbyterian Church,
 301 Avenue D, Redondo Beach



Reminders:

Wear your Name Tag

Invite a friend to the meeting