

# South Bay Quilters Guild

Volume XXX, No. 8

Established 1979

Feb 2010

**Guild Meeting on Feb 16 at 7:00 P.M. doors open at 6:00 pm**  
**St. Andrews Presbyterian Church, 301 Avenue D, Redondo Beach**

## President's Corner

### Julie Limbach-Jones

310/372-3889

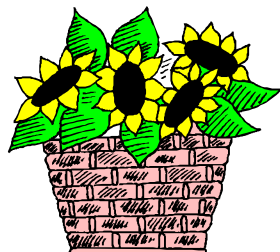
February is the month to celebrate love and friendship. I, for one, have found friendship and shared interests in SBQG. I also have found out about a lot of non-quilting things by being around such friendly and caring people. This is a great organization on so many levels.

Quilting is such a joy and especially so if you have a lot of support. I am very fortunate to have a supportive husband who: never looks at the mess in my sewing room (actually the living room) and gets upset; never questions the accumulation of fabric or related items (or the credit card bills); never gets upset when I tell him I'd rather work on a project than cook dinner or clean the house. As a matter of fact, he encouraged me to buy a sewing machine saying that the right tools make a difference in getting any task done.

For you members whose spouse needs some educating, see the article "How To Be A Quilter's Husband" that Doug Carnahan, member Olivia Carnahan's husband, wrote for Professional Quilters magazine. It appeared in SBQG's June 1989 newsletter, which I discovered while going through documents for our 30<sup>th</sup> anniversary celebration. I'm sure we could all add our own advice to his points as well. And with many men enjoying quilting now, we need to be politically correct and say "how to be a quilter's spouse".

February is also our month to shine! I'm really looking forward to celebrating "30 Years of Quilting" at our show. The quilt show committee has been hard at work since last spring preparing for our annual event. Be sure you have done your part (turn in opportunity tickets, finished up your entries, signed up to work) to help the weekend run smoothly.

See you at Guild,  
Julie



## Programs

Carolee Schuegraf

*Speaker :*

**Louisa Smith**



**Louisa Smith** is a quilter with a global perspective on needlework. Born in Indonesia, where the fabulous batiks of the region kindled a lifelong love of fabric, she was educated in the Netherlands, where years of appreciation for the needle arts started. Upon moving to the United States in 1960, she was immediately drawn to quilting and quickly became an accomplished devotee.

Although the quilting started off with a traditional approach, soon new and exciting designs took over and the traditional gave way to more innovative work. The incredible flexibility that fiber offers attracted her to "paint" with fabrics. She has developed two new teaching procedures: "[Color, Design and Theme](#)" and "[Strips 'n Curves](#)". The latter is the subject of her first book. Her second book, "[A New Twist on Strips 'n Curves](#)", features four new techniques and four complete project quilts.

Her lecture is entitled "**I'm stripping to show my curves!**"

She will explore this simple procedure called: Strips 'n Curves. These technique is a combination of strip piecing and curved piecing. This relationship between the straight and the curved lines are the key to creating dynamic designs! This technique is easy, fun and habit forming. You will learn this procedure and realize the many, many other design possibilities it has to offer. Many quilts and some slides to view and discuss.

Her work has been exhibited nationwide and in Great Britain. She now lives in Colorado.

## Workshops

Claudia Gomez  
cdgdesign@verizon.net  
310-245-756

**Feb 16 Louisa Smith**

### One Patch Plus

In just three easy steps: Color, Design and Theme, we will create beautiful quilts. Starting with a color source such as a picture or photograph, collecting the fabrics you see in this source, designing with simple shapes the base (or quilt top) and by embellishing further on the theme. Some of the shapes we will explore are: The Kite, The Curved Diamond, the Curved Kite and the Half Clamshell, etc. [www.quiltescapes.com](http://www.quiltescapes.com)



**March 17, LaVerne Owen-Barakat**

### "Quick and Fun Project Bags"

The fee for this class is \$10. LaVerne will also supply decorator fabrics you may use to make these great bags. We are trying to increase the number of students in our Workshops. We will see if this works. The first 15 people to sign up will go home with a unique bag. Sewing Machine required.

**April 20 Gwen Marston**

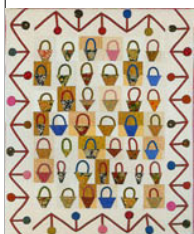
### 19th Century Folk Art Applique

This class is based on 19th Century Folk Art Applique quilts and is illustrated with my own quilts. Students will discover how easy and how much fun it is to create their own original lively quilts. Attitude and approach will be covered along with Gwen's easy techniques for designing and making these playful quilts. This class is good for beginners and advanced quilters alike and students should be well into the project by day's end.



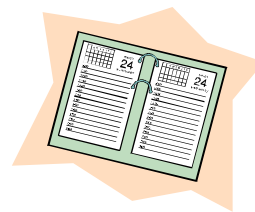
**April 21 Gwen Marston**

### Liberated Baskets



Illustrated with Gwen's quilts, students in this class will learn to make several different Liberated Baskets using Gwen's "easy-as-pie and always charming" methods. Good for beginning or advanced, traditional or art quilter. Quilters will leave class with a quilt top in tow. Learn Gwen's easy as pie techniques for making knock-out quilts.

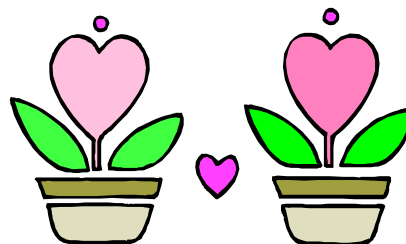
## Guild Calendar



- Feb 9 2nd Tuesday of every month; Sweatshop. 7:00 to 9:00 pm at Hamilton School .
- Feb 9 Quilt Show Mtg 7:00pm Hamilton Room 20, Torrance CA
- Feb 16 Guild Meeting St. Andrews Presbyterian Church, 301 Avenue D, Redondo Beach at 7:00 pm.
- Feb 17 Workshop at Luella's 1512 Aviation, Redondo Beach at 9am-3pm
- Feb 20, 21 South Bay Quilters Quilt Show
- Feb 26 Newsletter Deadline
- Mar 2 Guild Board mtg at Coco's in Manhattan Village Mall. Business meeting begins at 6:30pm. All members are wel-

## Thank you

Helen Carson would like to thank everyone for their prayers and cards in the death of her mother-in-law, Caroline Carson. Your concern and thoughtfulness to my husband and our family during this difficult time, was greatly appreciated. Thank you.

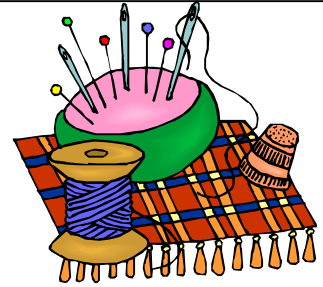


## 2010 Quilt Show

Sue Glass

310-372-3945

**We're coming down to the wire and need your help to make sure we are ready to go!**



**Auction Quilts:** We can use a few more auction quilts! Cindy Murray will accept them until the February guild meeting. Please call her if you have one to contribute. Cindy also has show pins for those who have contributed an auction quilt. Be sure to see her at the February meeting.

**Opportunity Quilt Tickets:** We need all members to turn in their stubs and money no later than the February meeting so Sheila Franklin can get everything accounted for. Please call Sheila to make other arrangements if you will not be at guild in February.

**Show entrance for guild members:** You are entitled to **one** free day at the quilt show in return for working at least 3 hours at the show. You must have your letter in hand to receive your free day. Volunteers working Friday evening must also show their letter at the entry tables for one day free entry. Please make sure that if you are bringing a spouse or friend to work on Friday evening that you tell Bonnie Winters or Bonnie Hutchins so that person can get credit too.

**The Hoffman Challenge Quilts** have arrived and they are beautiful. These quilts are from the 2009 challenge, and have not been seen in our area before, so tell your friends! This trunk goes to Chicago to Quilt Festival after our show, and unless you are going to Chicago, you won't have another opportunity to see these quilts.

**Help us publicize our special guest:** Dr. Robert Bates, of Bates Chiropractic, Manhattan Beach, will present the latest information about quilting pain free. He gave us a lot of great tips last year, so don't miss his updated talk. He will be speaking in the food court at 2 p.m. on Saturday. This lecture is included with show admission.

**Quilt Show DVD:** You can preorder the show DVD at the February guild meeting. The price is \$7.00 per DVD. Remember the guild receives 25% of the total from the DVD sales. These DVDs would make great holiday or birthday gifts. The actual SBQG Show DVD will be ready for sale and pickup on Saturday at our quilt show.

**Staffing** sheets will be available at the guild meeting so you can sign up for your 3 hours of work or more at the show. If you can't work during the show weekend, call Bonnie Hutchins or Bonnie Winters. If you have not signed up, expect a phone call from our fearless Staffing crew!

**Raffle Baskets** are all ready to go. Many thanks to everyone who contributed. We have 11 baskets and one of Susan Gibbs' great hooked rugs to choose from. The raffle will be held at 3:45 on Sunday, just before the opportunity quilt drawing. Please help us get the word out about these baskets both before and at the show! Tickets will be available at the basket table, \$1 each or 6 for \$5 and you will select the basket(s) to try your luck on. Thanks to Susan, Diane Miller, and Patty Price who worked hard to make these baskets so wonderful. Let's make this a real money raiser for the guild!

## **PROPOSED BYLAWS CHANGE AND ADDITION TO THE STANDING RULES:**

Printed below is Article III Membership of SBQG's Bylaws. The Board is proposing the addition of Section 5 to this article. Associated with the change is an addition to the Standing Rules, item R, which clarifies items in the Bylaws. We are required to have a 30-day written notice before a vote on a Bylaws change, so this will be up for voting at our March 2010 meeting.

### **ARTICLE III MEMBERSHIP**

#### **Section 1. REGULAR MEMBERS.**

- a. DEFINITION. Regular members participate in all activities of the Guild and are eligible to vote. The number of regular members shall be defined in the standing rules.
- b. QUALIFICATIONS. The following requirements for regular membership must be satisfied on an annual basis between August 1 and July 31 and documented as defined in the standing rules. If not satisfied, the member will **not** be considered for membership for the following membership year.
  1. Payment in full of annual dues as defined in standing rules;
  2. Attendance at a minimum of three general meetings;
  3. Participation in:
    - (1) The work of presenting the Quilt Show **and**
    - (2) The work of the Guild.

Qualifying activities shall be listed in the standing rules.
  4. Payment in full of library fines and bills for lost material.

#### **Section 2. JUNIOR MEMBERS.**

- a. DEFINITION. Junior members of the Guild are of minor age and are sponsored by an adult regular member. They may participate in all activities of the Guild except as restricted in the standing rules.
- b. QUALIFICATIONS. The requirements for junior membership shall be the same as for regular membership except as restricted in the standing rules.

#### **Section 3. ASSOCIATE MEMBERS**

- a. DEFINITION. Past or present regular members, who (1) move out of the area or (2) are unable to meet the requirements for continued membership due to illness or other unusual circumstances, may be permitted, by a majority vote of the Board, to become temporary associate members for the current year. Continuing associate member status shall be approved by a majority vote of the Board at the August Board Meeting.
- b. PRIVILEGES. Associate members: (1) shall pay annual dues as defined in standing rules, (2) shall receive the newsletter, and (3) may participate in activities of the Guild. They may resume regular membership at any time, without going on the waiting list, upon being able to meet the requirements of regular membership and payment of the difference in dues.

#### **Section 4. MEMBERSHIP REVIEW**

- a. MEMBERSHIP ACTIVITY RECORDS. Members shall be responsible for ensuring that their qualifications for membership renewal are documented and provided to the Membership Chair (as specified in the standing rules).

## **PROPOSED BYLAWS CHANGE (Cont)**

- b. MEMBERSHIP ACTIVITY REVIEW. One month prior to the end of the membership year, the Membership Chair and Membership Assistant shall notify regular members who have failed to meet the requirements. To be considered for membership renewal, these members shall be invited to submit a letter to the Membership Chair stating their reasons for not completing the requirements. At the September Board meeting, the Membership Chair shall present the attendance and activity records and the membership committee's recommendations to the Board. The Board shall decide on acceptance of membership and notify the member of the decision, in writing, by the September general meeting.
- c. WAITING LIST. A waiting list, if required, for regular membership shall be maintained by the Membership Chair once membership reaches the limit as defined in the standing rules. Applicants may attend an unlimited number of meetings as paying guests. If the number of regular members drops below the limit, applicants on the waiting list shall be invited to join in sequential order.

### **\*\*\*\* NEW SECTIONS \*\*\***

#### **Section 5. LIFETIME MEMBERS**

- a. DEFINITION. Lifetime member status may be conferred upon members who have, over numerous years, displayed an extraordinary level of contribution to the work of the guild. Lifetime membership is to be conferred sparingly to no more than two persons within a Guild year. Lifetime members may participate in all activities, are eligible to vote, but are not required to pay annual dues or fulfill membership requirements.**
- b. QUALIFICATIONS. The following minimum requirements will provide guidance for submitting nominees to the Lifetime Membership Committee.**
- Minimum 10 years continuous membership in the Guild.**
- Service in multiple years as elected officer or providing major support in a "work of the guild" position.**
- Nomination in writing by a current member in good standing following procedures outlined in the standing rules.**

#### **STANDING RULES**

##### **R. Lifetime Membership**

**It will be the responsibility of the Board to appoint a five member temporary committee (one shall be the then current membership chairman) to consider individuals nominated for Lifetime Membership. This committee should have sufficient depth of Guild experience to fairly evaluate nominations.**

**Any member in good standing may nominate a candidate for Lifetime Membership consideration. Nominations shall be in writing and submitted to the Membership chairman on or before the April Guild meeting.**

**Lifetime Membership temporary committee will present their recommendations (if any) to the Board at the May board meeting for final approval.**

**Lifetime Memberships (if any) shall be presented at the June business meeting.**

**Due to the sensitive nature of the overall process, all materials and discussions shall be held in strictest confidence. Only the name(s) of individual(s) actually selected may appear in Board minutes.**

## Community Services

### Mary Shadbourne 310-326-4953



Remember to pick up and return your Community Services Questionnaire at the February guild meeting. We're looking for 100% member feedback! If you'd like to receive your questionnaire via email, that can be easily arranged. Contact [ashadbourne@socal.rr.com](mailto:ashadbourne@socal.rr.com) for a quick response.

#### Julie Limbach-Jones' Pet Project: One Million Pillowcase Challenge

For those of you who'd like to donate, but don't have the time to make a whole quilt, here's a new pet project for 2010. American Patchwork & Quilting has a One Million Pillowcase Challenge. You can find more information at <http://www.allpeoplequilt.com/millionpillowcases/index.html> on how many quilts have been donated to date as well as downloadable pillowcase instructions which will be updated each quarter. There will be a few copies of the patterns available at the Community Services table and a card with any links we find for pillowcase ideas. One is the "hot dog" method <http://www.conkercancer.org/pdf/hotdogmethod.pdf>. Julie Limbach-Jones saw this method demonstrated (the "french seam" version) at a quilt show and it seems like an easier/faster/nicely finished way to make pillowcases. Please give your completed pillowcases to Julie and she will keep a count and upload SBQG information to the Challenge website. Community Services will find some deserving homes for our creations in the South Bay community.

Before the meeting, we'll be demonstrating the "hot dog" method for making pillowcases at the Community Services Table. We'd previously planned on demonstrating vertical row top construction, but this month, we have very few kits using that construction method, so we've postponed the demonstration to our March meeting. I know many of you know this technique, but we've had several requests in the last few months.

We'll be bringing fifty quilts (with floss) to this month's guild meeting for you to take home for tying. Call or email me if you want to have ten or more "reserved" for you.

Second Tuesday sweatshop will be in our usual Room #20 at Hamilton Adult School, 2606 182nd Street, Torrance. Plan on bringing your machine if you can. See you there!

### Read me a Quilt

#### Julie Maas



Many thanks to Barbara Beer for making a lovely cheerful quilt for a foster child. I know that all of you are busy finishing your show quilts but please don't forget our CASA children. The quilts mean so much to them and to the people who take care of them.

*Happy Valentine's Day* ♥

### Fashion Show 2010

#### Pam Overton

#### 310-546-5990

While we're all busy putting the final touches on this year's quilt show it's not too early to start thinking about our annual Fashion Show for 2010. I'm planning something a little different this year and I've come up with a theme that should be familiar to all. And what, you wonder, is that? Let's just say we're planning to cook up a wonderful afternoon for you! The date is tentatively set for September and we'll be asking each and every one of you to participate in one way or another. The date and venue haven't been identified yet but we already have lots of ideas mulling around. Would you like to join the Fashion Show Team as we brainstorm and plan for this year's fashion show? Please give me a call and let me know that you're interested. Pam (310-701-2706). There's a lot to do so we'll plan to hold our first committee meeting in March. Join us?

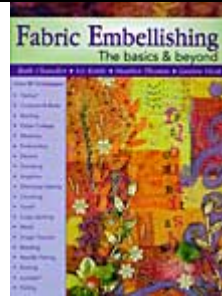
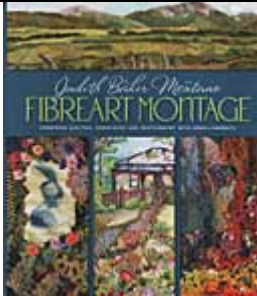
# Library

# Dawn Cynamon

## Focus On Embellishments

FIBREART MONTAGE is the latest from Judith Baker Montano on mixed media techniques that combine quilting, embroidery, photography and embellishments. Plenty of "eye candy" here to inspire you.

FABRIC EMBELLISHING: THE BASICS & BEYOND covers Textiva®, Cocoons & Rods, Burning, Paper Collage, Weaving, Embroidery, Dévoré, Stamping, Angelina, Discharge Dyeing, Couching, Tyvek®, Crazy Quilting, Metal, Image Transfer, Beading, Needle Felting, Rusting, Lutradur®, Foiling and more.



*Add this to your personal reference library. A copy of this book will be included in the February Raffle!*

Remember the guild when buying books at AMAZON.com

**Do you blog?**

**Check out the guilds new web page!!**

The SBQG website has a new look, a blog, and a photo gallery! Update your favorites/bookmarks to:

<http://www.southbayquiltersguild.org/index.htm>

## Quilts for Wounded Soldiers

**Arlene Zobrist 310-543-5302**

We now have a flag that was flown in a combat mission over Afghanistan on Thanksgiving Day, in honor of our California quilters who have made quilts for our wounded soldiers. This flag, mounted in a beautiful plaque, was delivered to my home on Christmas Eve – a wonderful Christmas gift ! The medic who arranged this also sent me an email saying how thankful they are to receive these quilts.

This month thanks go to Nadine Kirk for the 2 quilts she donated and to Lorraine Dublin for completing 3 quilts. These lovely patriotic quilts are on the way to the combat hospital in Balad, Iraq. I just got a new point of contact for Afghanistan and hope we'll be able to send them some quilts soon -- I'm sure they are needed. Our goal is to provide a quilt to every critically wounded soldier, to provide warmth in ICUs and on their trip home, and to tell them we appreciate their sacrifices. If you have any quilts completed before our next meeting, please let me know and I'll be glad to pick them up.

A couple special Quilts for Wounded will be on display at our Quilt Show in the Community Services booth, along with the flag/plaque from Afghanistan, so stop by to see them. Long-arm quilting in patriotic designs on all 7 quilts displayed at our Jan meeting was donated by new members Don & Diana Bunting -- many thanks to them for putting a special touch on these quilts to support our troops. Several pictures of quilts from SBQG members are displayed on the Quilts for our Wounded website at [www.citizensam.org](http://www.citizensam.org), then click on the Quilts link.

**Requirements for the quilts:**

**Size: 48" by 78" (stretcher size)**

**All cotton, no synthetics (including batting, but small blend of 80/20 acceptable)**

**Red/white/blue or appropriate patriotic theme (no children's cartoon characters)**

**SBQG Treasurer's**

**Report for Jan 2010**

**Income**

Advertising	140.00
Amazon earnings	67.67
Guest Fees	30.00
Interest	2.05
Library raffle	31.00
Library sales	8.00
Membership	260.00
Trip Fees	1,438.00
<b>Total</b>	<b>1,976.72</b>

**Expense**

Guild Ops	213.36
Hospitality	153.14
Newsletter	184.98
Programs/Wo	1,205.00
Travel	299.94
<b>Total</b>	<b>2,056.42</b>

**Net Income (79.70)**

**Ending**

Checking-	21,587.54
CD-	11,218.58
CD-Bank of	5,733.84
	<b>38,539.96</b>



**MEMBERSHIP**

**PAT BRYAN**

310-547-3824



**WELCOME NEW MEMBERS!**

It was great to meet 4 new members at our January meeting. A warm welcome to Sharon Amos, Roseanne DiMarco-Burnham, Diana Bunting, and Karen Yarrow. You may recognize Karen and Sharon as they are "re-members" who joined again after an absence and Diana is the wife of Don Bunting who joined last year. Please look for these new members at our next meeting and introduce yourself.

We still have some membership booklets to be picked up and if you forgot to pick up Membership Update #1 in January it will also be available.

Our February door prize will be a \$10.00 gift certificate for THE COTTON SHOP. See you at Guild!

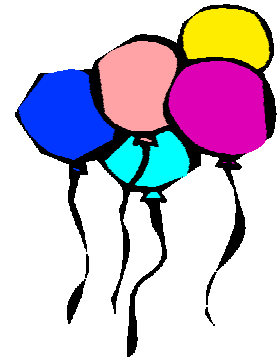
**Sunshine and Shadows**



Patty Price is a first-time Grandma. Her grandson, Gino Anthony was born Dec 2<sup>nd</sup>, 2 1/2 months early. He now weighs 5 lbs, 2 oz and is eating on his own more every day.

Congratulations to Donna Anderson who won a third place ribbon at the LA County Fair for a Challenge Block. The LA County Fair deadline for entries for 2010 is June 29<sup>th</sup>. See their website for entry information.

Former member Mollie Zick is the first person to have her quilts displayed at the Corpus Christi Art Center. She will be teaching a 2-day landscape quilting class as well, also a first for the center.

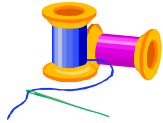


**February Birthdays**

William B "Bill" Jones	2/3
Mary Jane Jewell	2/4
LaVerne Owen-Barakat	2/6
Mary Ann Santos	2/8
Ethie Wilson	2/13
Linda Chow	2/14
Red Winter	2/15
Ann Short	2/18
Alexandra Tsubota	2/18
Pat Hollarn	2/20
Nancy Payne	2/20
Rita Wagstaff	2/22
Betty Keller	2/25
Yone Sakamaki	2/28



## Intra-Guild



Stephania Bommarito  
(310) 329-5474  
quiltwizard1024@aol.com

Pam Overton  
(310) 546-5990  
pamoverton@earthlink.net

Birthdays – We'll celebrate the February birthdays this month. As always we will have "birthday gifts" for a few lucky winners. Please plan to stand and identify yourself. This a great opportunity for the guild members to get to know the face that goes with the name! And who knows, you might meet someone that shares your birthday.

Elsewhere in the newsletter you'll find our next bi-monthly block exchange pattern – Finished blocks can be turned in at the February or March meetings. For every block that you make and donate, you'll have a chance to win a set of blocks! A ready made quilt. What fun! And I had an idea last month after I saw blocks start coming in . . . why not make an extra block or two to donate to community service. With enough blocks we might have enough for a twin size quilt for Turtle Camp!!

Don't forget, we're always happy to update your UFO listing (to add new ones or check off some that are finished J).

And now, this month's big news. . . Over the last year or so, many of you have asked about a challenge or round robin type activity. I was chatting with someone recently about round robins – the problems, the fun, the challenge – and I think we've come up with a new way to approach a round robin!

The challenge, fun, and reward will still be there, but hopefully we can eliminate the frustration!

And how, you ask, will we accomplish that? Easy, it will still be a round robin of sorts, but will not travel to others. You'll start with a 12-inch or smaller center block of your choice. We'll each add three rounds to our blocks. Where's the challenge? We do that all the time! Instead of passing it around to others each month (March, April, May) you will draw from the "technique basket" and use that technique/instruction to add your new round. In the technique basket you will find directions like:

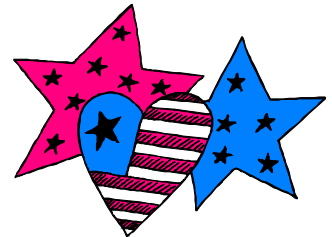
Use flying geese      Use flying geese in two sizes      Use 9 patches      Use appliqué

Introduce a new fabric      Turn lines into curves . . . and on and on. Stephania and I have put our heads together and have come up numerous "round instructions" for you. Each person will draw a different technique each month. We'll have labels available so you can record the technique for the back of your quilt. We'll work on the quilts in March, April, and May and bring the finished tops to show at our June meeting. So give it some thought. We would love to have lots and lots of people participating in our "round robin".

If you have any suggestions for intra-guild activities do let us know. We're always open to new ideas!

## Patchwork Star Reporter

### LaVerne Owen-Barakat



February 2010 Patchwork Star is our long time member, Raylene Christmas. Raylene joined the guild in 1979 at Quilts Unlimited. She held the position of Membership Chair for three consecutive years when many of us came to know her. Now Raylene is well known in the guild for her beautiful long arm quilting. She is the proprietor of her own long arm quilting and quilt making business.

She has been sewing since the time she was about 5 years old. Her mother started her sewing on a treadle machine and she hasn't stopped since. Even in Home Economics rumor has it she taught the teacher a few things. She gravitates to blues of all shades and likes almost all patterns. While she has no favorite style, Judy Wood was her favorite teacher. She loves to read and belongs to a book club.

Raylene moved here from Oklahoma when she was only 10 months old. She is married, has three children and two step-children, and eleven grandchildren. Apparently, she has been a very busy woman.

It might surprise you to learn that she and her husband, John ride motorcycles and have for more than thirty-two years. They have shipped their bikes as far as Italy to see the scenery their way. They have also visited 49 states, Canada, Alaska, and Mexico, all seen from their Honda Goldwings. In the past eighteen months, she and her retired husband have traveled to Israel, Egypt, Jordan, Turkey, Greece, Alaska, Hawaii and Mexico. I think we are all asking, "When does she have time to quilt?"

# Bi-Monthly Block Exchange

## Irish Chain (from McCall's Quilting)

**Size: 12" Finished**

Beginner Level

### Cutting Instructions

#### Dark green print

... Cut 2 squares 3 7/8" x 3 7/8"

... Cut 1 square 4 3/4" x 4 3/4"

#### Med green print

... Cut 16 squares 2" x 2"

#### Cream

... Cut 2 squares 3 7/8" x 3 7/8"

... Cut 16 squares 2" x 2"

... Cut 2 squares 3 7/8" x 3 7/8"; cut diagonally to make 4 half-square triangles.

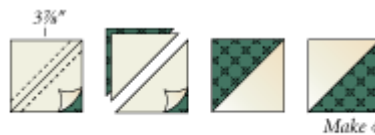
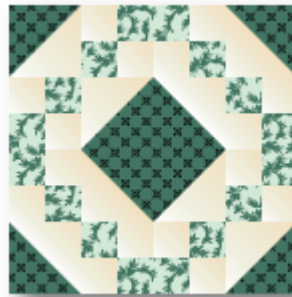


Diagram I

### Assembly Instructions

**Step 1.** On wrong side of 3 7/8" cream fabric, draw diagonal line with the marking tool of your choice. Layer square with 3 7/8" dark green print square, right sides together. Sew 1/4" seam on each side of marked line; cut apart on marked line. Press open to make pieced squares (Diagram I). Make 4 pieced-squares.

**Step 2.** Using Diagram II-A as fabric placement guide, sew 2" cream and medium green print squares together to make pieced square unit. Make 8.

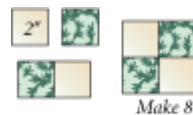


Diagram II-A

**Step 3.** Paying close attention to placement, sew 2 pieced square units together to make piece rectangle unit (Diagram II-B). Make 4.



Diagram II-B

**Step 4.** Using Diagram III as a guide, sew 3 7/8" cream squares to 4 3/4" dark green square to make square-in-square unit. Make 1.

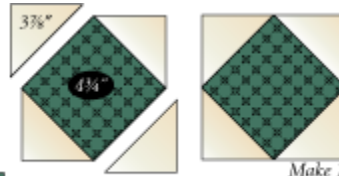
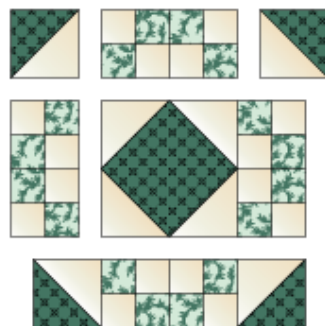


Diagram III

**Step 5.** Sew units together to make rows (see Assembly Diagram). Sew rows together to make Irish Chain Block.



Assembly Diagram

## 2010 Quilt Show

### Income

Advance	\$534.00
Show Admissions	
Interest	5.02
Income	
Opportunity	2,414.00
Opportunity	155.00
Pins	30.00
Vendors	6,120.00
Total Income	\$9,258.02

### Expense

2010	\$327.75
2011	115.06
Acquisitions	157.65
Facilities	9,280.00
Hoffmann	150.00
Opportunity	464.10
Pins	472.87
Publicity	1,716.03
Total	\$12,683.46
<b>Net Income</b>	<b>(\$3,425.44)</b>
<b>Ending</b>	<b>\$4,075.06</b>



## Upcoming Events

- March 5 - 6** Desert Guilds Quilt Show Sunshine, Shadows and Stars 401 S. Pavilion Way, Palm Springs, Ca Featuring: over 150 quilts, Merchant Mall, Opportunity quilts, mini quilts, Harpist, Boutique and ASQ certified appraiser.  
*Email Contact:* [didiray70@aol.com](mailto:didiray70@aol.com)  
*Website:* [www.cvquiltguild.org](http://www.cvquiltguild.org)
- March 6 - 7** Friendship Square Quilt Guild "A Bouquet of Quilts" March 6-7, Sat. 10-5 & Sun 10- 4. La Habra Community Center, 101 W. La Habra Blvd., La Habra, CA 90631. Admission \$6.00 Featuring: Large Quilt Display, Merchant Mall, Silent Auction, Boutique, Quilt Sale and Opportunity Quilt. Our beautiful Opportunity Quilt "Floral Fantasy" 2010 is a Baltimore Album style which is hand appliqued and hand quilted. The drawing will be held Sunday, March 7, at 3:30pm. Please join us.  
*Email Contact:* [fsqg81@yahoo.com](mailto:fsqg81@yahoo.com)  
*Website:* [www.fsqg.org](http://www.fsqg.org)
- March 19 - 21** Glendale Quilt Guild 31st Annual Quilt Show, "Asian Odyssey". Three fun filled days at the Burbank Airport Marriott Convention Center. Quilt, doll & wearable displays. Workshops, lectures, vendors, an auction and much more.  
*Website:* [glendalequiltguild.org](http://glendalequiltguild.org)
- March 19 - 21** Quilt Las Vegas 2010, "New Beginnings" Our 20th ~Annual Quilt Show, with approximately 200 quilts on display and 30 vendors. The theme is "New Beginnings." The Featured Quilter will be Janett Rice. An appraiser will be available by appointment. There will be a Fashion Show on Friday and a miniature quilt auction on Saturday.  
*Email Contact:* [kegarth@cox.net](mailto:kegarth@cox.net)  
*Website:* [desertquiltersofnevada.org](http://desertquiltersofnevada.org)
- March 6** San Joaquin Valley Quilter's Guild presents "Springtime in the Valley" at the Clovis Memorial Hall, 453 Hughes Avenue, Clovis CA on March 6, 10am to 5pm and March 7, 10am to 4pm. Admission is \$7 and the show features over 200 quilts on display, Guild Challenge Quilts, merchant mall, quilters café, Doll-emmas Cloth Doll club display, opportunity quilt and raffle baskets drawings on Sunday 4pm. For additional information call Sue Sidebottom at 559-455-06215 or e-mail: [suziquilts@aol.com](mailto:suziquilts@aol.com)
- May 14, 15** The Chula Vista (CA) Quilters Guild proudly announces that their annual show will be held on May 14-15, 2010 from 10 a.m. to 4 p.m. at the Community Congregational Church, 276 F Street, Chula Vista, CA 91910. The show is located in Bradley Hall; enter at the back of the church grounds near the intersection of Church and Center Streets. Adm is \$5. Our show proudly hosts a trunk show of the Internation Hoffman Challenge, quilts from all disciplines, vendors, and a boutique where guests can buy hand-made gifts at very reasonable prices. Info: [jschlarb@gmail.com](mailto:jschlarb@gmail.com) or [Chulavistaquiltersguild.com](http://Chulavistaquiltersguild.com).

## Scrap Bag



For a free, downloadable fun and whimsical valentine quilt pattern with a message see

[http://janome.com/index.cfm/ProjectCenter/Project\\_Detail/Keep\\_the\\_Heart\\_Truth\\_Growing\\_Wallhanging](http://janome.com/index.cfm/ProjectCenter/Project_Detail/Keep_the_Heart_Truth_Growing_Wallhanging).

## **HOW TO BE A QUILTER'S SPOUSE** by Douglas G. Carnahan

Those of us familiar with quilting, directly or indirectly, are aware of those countless publications and articles that discuss the history and the craft of quilting. Anyone who wants to know quilting technique, quilting art, or quilting history (or even historiography) can easily find thousands of works on those subjects in libraries, museums, art galleries, and quilting stores. Permanent and temporary quilting exhibits are rife with written materials sold and shown alongside the quilts.

There is one aspect of quilting, however, which I have had to learn by on-the-job-training: How to be the spouse of a quilter.

First of all, let's not speak just of understanding. Everyone in a quilter's family knows the quilter needs understanding. Saying so just reiterates the obvious. American folklore abounds with clichéd spouses of aficionados: wives of golfers, fishermen, hunters, doctors, and football fans are all said to be paragons of understanding, and noting this doesn't add much to the discussion. What is needed is some concrete advice. So in that spirit, here is a point-by-point series of suggestions for that much maligned and little appreciated species, the spouse of the quilter.

Don't try to rationalize the acquisition of fabric. Quilters need to acquire fabric; no one knows exactly why. Fabric acquisition by quilters is something like quantum physics: you have to be a physicist to understand it. Even when you find your den, garage, or hall closet filled to the rafters with fabric squares you will not receive an explanation. The phenomenon apparently has little to do, as I once thought it did, with the need for fabric in quilts. Acquisition and manipulation of the fabric has a tactile component which seems to satisfy some deep-rooted need. If you relax and just let this happen you will not be so mystified; from time to time, in fact, a fabric square comes in handy for something, like lining a handgun case.

Don't be drawn into the debate between hand quilters and machine quilters. Devotees of the two schools feel towards each other the way Democrats feel towards Republicans or cats towards dogs. If your spouse is a hand quilter don't suggest you could be saving time by using a machine—the time it takes has nothing to do with the process. If your spouse does use a machine don't suggest that a true artist would do otherwise.

Don't get involved in the internal politics of quilting guilds. Everyone knows academic politics are nastier than real politics. Quilting politics are nastier than academic politics.

Don't expect a finished product any time soon. This relates to the hand quilting/machine quilting debate. The product is not the purpose of the process. The process is the purpose of the process.

Get a good map book. Quilt shops are always located as far from the beaten path as possible.

Find out if any of your relatives have old quilts. Chances are you have some relatives with heirloom quilts stored away somewhere. Once you reveal this to your spouse, your quilter will look on your relatives more favorably, making visits less stressful.

Expect some sleepless nights. Quilting ideas are great sleep robbers. Expect this phenomenon on nights your spouse returns from quilting conventions and quilt shows.

If you can't get into the quilting itself, try to learn something about quilting history or sociology.

Corollaries: If you smoke or drink, stop. It can be hazardous to quilts. Drink your coffee in the kitchen only. Look out for needles before you sit down anywhere. Realize that in your quilter you have a rare prize, and love your quilter with all your heart.

**AAA Sewing & Vacuum Center**  
**3770 Sepulveda Blvd.**  
**Torrance, CA 90505**

- QUILT FABRIC
- MACHINE SALES
- SEWING CABINETS
- QUILT FRAMES
- EMBROIDERY SUPPLIES
- SERVICE & REPAIRS
- CLASSES & EVENTS
- SCISSOR SHARPENING



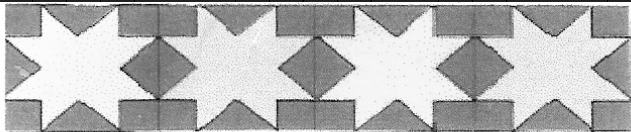
(310) 791-1190 • [www.aaasewingandvacuum.com](http://www.aaasewingandvacuum.com)  
 at the corner of Hawthorne & Sepulveda

**The guild is on FACEBOOK!**

Users can access the Facebook link from our home page, right below the Amazon.com link.



*Raylene Christmas*  
 310-704-7312  
 Long Arm Quilting  
 Hand-Made Quilts



*Linda's Quilting Studio*

Professional Hand Guided  
 Machine Quilting

San Pedro  
 Call For Appt.

Linda Crane  
 310 833-4141

**The Traveling Quilters**

P.O. Box 3214, Manhattan Beach, CA 90266

**A Tour Service for Quilters!**

2010

- Road to California (San Diego Departures only) – January 16
- Temecula Quilt-Away Retreat – February 25-28
- It's a Mystery! – April 24
- Temecula Quilt-Away Retreat – June 3-6
- July 24 – Long Beach Quilt Festival (San Diego and Victorville departures)
- AQS Show Des Moines, Iowa – October 4-10

Would you like to be on our mailing list? Just drop us a note at the address above, or e-mail: [pam@travelingquilters.com](mailto:pam@travelingquilters.com)



**Luella's Quilt Basket**

would like

to congratulate the  
 South Bay Quilters Guild

on

“30 Years of Quilting”

Here's to a fabulous show!

Thank you for including us in  
 your vendor mall!

---

**Luella's Quilt Basket**

1512 Aviation Blvd.

Redondo Beach, CA 90278

**Auction Quilts** are being accepted by Janet Akman and Cindy Murray at all guild meetings. The form that must accompany auction quilts is available on the website, or elsewhere in this newsletter. You can also fill it out at the table at guild when you submit your quilt.

### Auction Quilt Entry Form

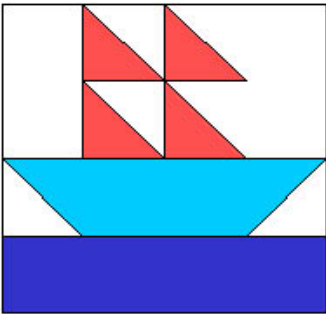
This form must be completed and submitted with your auction quilt entry. Your entry must also have a sleeve. Contact Janet Akman or Cindy Murry if you have questions about auction quilts for 2010.

Quilt Title: \_\_\_\_\_

Quilter: \_\_\_\_\_

Size (inches): \_\_\_\_\_ x \_\_\_\_\_ Techniques used: \_\_\_\_\_  
Width Length (Machine Pieced, Hand Quilted, Etc.)

Description:  
\_\_\_\_\_  
\_\_\_\_\_  
\_\_\_\_\_  
\_\_\_\_\_  
\_\_\_\_\_



South Bay Quilters Guild  
P.O. Box 6115  
Torrance, CA 90504

**Guild Meeting:**

**Feb 16 at 7:00 p.m.**

St. Andrews Presbyterian Church,  
301 Avenue D, Redondo Beach



**Reminders:**

Wear your Name Tag

Invite a friend to the meeting