

South Bay Quilters Guild

Volume XXXIII, No. 6 Established 1979

December 2011

President's Corner

Pam Overton

Hope you can join us at our Annual Holiday Dinner meeting. Mary Ann Sereth has planned a great dinner for us. If you haven't already signed up for the dinner and want to, please give Mary Ann a call before December 6th. We must give the caterer a headcount. And don't forget, we'll start our meeting early that evening. Dinner will be served at 6:30.

We'll have lots going on that evening

- You'll have a chance to catch up with friends while you quilt
- Turn in your holiday stockings
- Last chance to submit your application to enter a quilt in the quilt show (pictures will be taken as well)
- Turn in your auction quilts
- Show'n'Tell – let's see those holiday gifts that are finally done (or almost)
- Turn in donations for DCS
- Turn in Read Me A Quilts and Quilts for Wounded Warriors (Arlene is hoping to fill a box to ship soon)
- Turn in donations for the St. Andrews Food Pantry
- Sign up for the bus trip to Road to California
- Bring in gently used games, puzzles, chess setssee Janet Coggins article elsewhere in the newsletter. This is a great opportunity for your kids/grandkids to clean out their toy closets before the holidays and help some Navajo children who have very little.

In an effort to "go green" and save some money, and since many of the guild directories are never picked up, the membership team will only be printing about 100 copies of the directory. You'll find an electronic copy of the database posted on the guild website. If you need a hard copy of the directory you can pick one up from the membership table when they are ready (probably in January). As with the newsletter, we hope you'll consider "going green."

Hope you can join us at the meeting. Happy Holidays! Pam ♦♦

Holiday Dinner

It is still not too late to sign up for the holiday dinner, just call Mary Ann Sereth then mail her a check for \$15 made out to SBQG. Her address is on page two. **The check must arrive by Friday December 9** we are going to have a great time and dinner, hope you can join us. Non-members are welcome, so bring a friend. That is a good way for them to meet our guild members. Happy Holidays!!

Do you have a G-mail Account?

Important: members who have a Gmail account and submit their Quilt Show entries through our new web form are not receiving the automated emails. Gmail doesn't recognize the From: address of SouthBayQuiltersGuild@gmail.com so it sends the email to the Spam folder. Please add SouthBayQuiltersGuild@gmail.com to your address book.

2012 Quilt Show “Twist on Tradition”

Stephania Bommarito

Quilt Show Miniature Auction: We are calling for quilts of all kinds – pieced and/or appliquéd, traditional or contemporary, whimsical or extraordinary. Our new auctioneer needs many to auction off! The quilt should not exceed 36 inches on any side; have a sleeve, and a label. Print an entry form from the Members side of our website or pick one up at a guild meeting. We look forward to seeing your dazzling creations! Ruby Tabata and Claudia Gomez will be glad to accept all donations through the January meeting.

Acquisitions: The deadline for submitting all quilts and garments is at the end of the meeting, Tuesday, December 13. You will find an acquisition form in the –Members Only section of our website under –Quilt Show Forms. We encourage electronic submission. We will be available at the December meeting to photograph your quilts or garments. All entries must go through the Acquisitions Committee including the Challenge quilts and large vintage quilts to be hung on Sunday. Your quilt does not have to be totally finished when you enter as long as you know you will have it done by the show. The photo must show design and color and the finished size must be defined in order to plan the hanging. Please completely fill out the form! Once again, you have the opportunity to have a professional judge review your quilt and provide a constructive critique. A judge's critique lets you know what you are doing well and if you need to improve in an area. There will be a fee of \$10/quilt to cover the judge's fee. If you have any questions, you can call or email Melanie Dreike, Pam Overton, or Carol Thomas.

Staffing: There are still many positions that need to be filled in many different areas. White Glove is our biggest need. What fun it is to share the beauty of our quilts with our guests. We also need help on Friday night to help set up the show. Stop by the sign-up table for the various tasks that need to be done before and during the Quilt Show. We ask that each member work 3 hours at the show. You can do three hours straight or split them up, Jean Newton will be glad to suggest possible jobs for you to do.

Raffle Basket: Red Winter and her committee have created 10 + baskets to raffle at the show. If you have any last minute goodies to add just let Red know. We have a wonderful variety of baskets. Thanks for all the donations!

Quilt Show Pins: The pins for the 2011 Quilt show are in and they are stunning. Diane Miller will have pins available at the Holiday Dinner. The pins are \$5.00 or free if you submit an auction quilt.

Opportunity Quilt Tickets: Be sure to turn in any monies you have collected. Plus, do not be afraid to ask for more. If you need a large number of tickets, please call her before the meeting so that she can have them ready.

Road to California White Glove and Ticket Sales: The Opportunity Quilt, “Floral Fantasy” will be hanging at the 2011 Road to California Show on Friday. However, we need to have White glove volunteers to fulfill our 20 hours obligation and to sell tickets on Friday. There will be sign-up sheets at the December meeting. Please help if you can. If we do not get enough people, we will be missing the chance to expose our guild and quilt to a wider audience.

Quilt Show Challenge “Twist on Tradition”: Have you found a favorite traditional quilt block for your challenge quilt? What new updated look are you giving that block? We look forward to seeing the many and varied results.

Quilt Show Presale Tickets: Nancy Payne will have pre-sale tickets available at the meeting. Find her at the Membership table. ♦♦

Library

Our guild library has been moved from Luella's Quilt Basket into the guild storage unit. A huge debt of thanks to volunteers Melanie Dreike and Janet Coggins and draftees Sherilyn Guernsey and husband who just happened to drop by Luella's at the right time (or wrong time, depending on your perspective!). Reminder, there is no Library at the December meeting, but I'll be happy to bring you a book or two if you e-Mail me a couple days in advance of the meeting. The list of books is on the website.



Thanks,

2013 Opportunity Quilt

The quilt is happening! It is new and different! Alex Tsubota has created a unique basket quilt for the 2013 show. She has kits available for both beginner and intermediate piercers and appliquers. If you have already picked up a kit and completed it, she will gladly accept them. ♦♦

Help Needed

In order to have our "Floral Fantasy" quilt at Road to California we need to provide 20 hours of white glove service. At the December meeting we will take sign-ups to white glove at Road anytime Thursday through Sunday days of the show. Better yet ... call Dee Evans today if you can help!! ♦♦



The Quilted Rose
Authorized Gammill Dealer



Free Introduction to Machine Quilting Class

This class is for the quilter thinking about purchasing a Gammill Quilting Machine for a business venture or for personal use. Your class will cover attaching a quilt to the machine, stitching from the front and back of the machine, an overview of supplies recommended for starting a business and recommended suppliers. *We furnish all supplies for this class.*

We schedule this class around you, our customer. Call us for an appointment that will fit your schedule. Gammill Vision classes and Statler Stitcher classes run around 3 hours each.

Used machines for sale.

If you need help selling your used machine call us for information on our used machine sales program.



When you purchase from The Quilted Rose you will be entitled to the following classes & thread to get your business going:

Statler Stitcher Purchase: 4 Days of Classes & \$500.00 in thread

Vision Purchase: 3 Days of Classes & \$500.00 in thread

Vision Premier Purchase: 2 Days of Classes & \$250.00 in thread

The Quilted Rose website has our current Newsletter, Business Plan, Gammill Specials, and Gammill pricing.

Hours:
Mon. - Fri.
9am - 4pm
Saturday:
10am - 2pm



The Quilted Rose
7151 El Cajon Blvd. Suite O ♦ San Diego, CA 92115
PH: 800-660-8282
Web: www.thequiltedrose.com ♦ Email: thequilted@aol.com



Calendar



Dec 13	Guild Meeting at at St. Andrew's Presbyterian Church, 301 Avenue D, Redondo Beach. Dinner Meeting— See page 1 for details. Remember to bring canned goods!
Dec 30	Newsletter Deadline! Please send all newsletter articles to Carol Berg
Jan 3 6	Guild Board meeting at Marie Calendar's near intersection of Hawthorne and Torrance Blvd. in Torrance . Business meeting begins at 6:30pm. All members are welcome!

COMMUNITY SERVICE—Janet Akman

Our final quilt tying event for 2011 will be at the December Holiday Dinner meeting. Mary will be bringing plenty of quilts to tie. All you need to bring is your favorite large eye needle, snippy scissors and your Holiday Spirit



Julie and Arlene will be accepting quilts for CASA and Wounded Warriors.

Option 1: Show your quilt at Show and Tell then give them to Julie, Arlene or me.

Option 2: Turn your quilt in at the table. Make sure we have your name and name of book on the list. Also please put your name on the back of the quilt so we can easily identify the maker.

We will continue to collect items for the Department of Child Services. Coming soon to our website will be the DCS project statement including the types of items and age ranges for these backpacks.

Please remember St. Andrews food pantry and the pillowcase project. Thank you for your continued interest and support of these service opportunities.

Happy Holidays to all of you....May you share this season with loved ones, wrapped in warmth, love and quilts. ♦♦

With Love Quilt Project...

Mary Shadbourne

All aboard for Quilt Tying Night! Tuesday, December 13, 2011, right after our annual Holiday Dinner. There'll be the usual drawing prizes (bring one--or more--to donate if you can), and music and quilty holiday fellowship. If you have a favorite big, sturdy needle, bring it along. If you've taken home a bundle of quilts to tie, please bring them to the December meeting or call me (See page 2) and I'll be happy to pick them up. If you have toiletries to donate (travel or otherwise), bring them to the meeting as well.



Watch this space for news of a series of little "New to You" sales that will take place during the January, February and March guild meetings. This should be fun--we'll keep you posted.

Good news from our facilities manager! We're cleared to return to Levy Adult School for our second-Tuesday sweatshops starting in January!♦♦

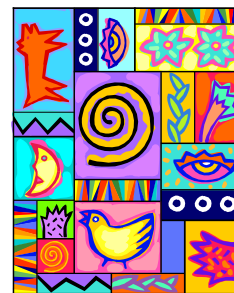
Read Me a Quilt

We had 14 lovely Read Me a Quilts turned in at our last meeting. In addition, Dee Evans donated 4 baby quilts with bibs. These were requested by CASA for the emergencies that arise when babies are detained at court. Many thanks to Dee plus the following ladies; Pat Bryan (3), Nadine Kirk (3), Ann Short (2), Gini Ozene (2), Phyllis Meltzer, Anita Rising, Elizabeth Burke/Diane Winthrop and Grace Peng.

This time of year CASA needs as many quilts as possible. There are so many children whose lives would be so much brighter if they received a special gift, a quilt with a book to go with it. If you can spare a bit of time to make another quilt (or 2 or 3) the CASA Supervisor will make a special trip to pick these up and be sure they reach the children in time for Christmas. So, if you finish a quilt by December 10 or 11, please contact me and I will arrange a pick up from you. Let's make as many children as possible happy this holiday season.

Thank you.

Julie Maas♦♦



Pacific West Quilt Show

CALL FOR ENTRIES

Mark your calendars for the 2012 Pacific West Quilt Show August 24-26, 2012 at the Greater Tacoma Convention & Trade Center 1500 Broadway, Tacoma, WA 98402 (See web site <http://www.gtctc.org/>)

There are over \$25,000 in Cash & Prizes

Entry Deadline: April 20, 2012 (Images and fee received)

Permanent residents of the following areas are eligible to submit entries:

USA-AK, AZ, CA, CO, HI, ID, MT, NV, NM, OR, UT, WA, WY

CANADA-AL, BC, NT, SK, YT

APWQ Members \$15 per entry Non-members \$30 per entry

Limit of two entries per person. For entry forms and rules see the website:

<http://apwq.org/pwqs/2012/2012%20Contest%20Rules.pdf>

or email: contest@apwq.org [mailto:contest@apwq.org?]

You may mail in your contest entry now or use the online registration form available January 31, 2012.

~~~~~  
 If you were able to attend the show, then you'll know first hand what a spectacular and world-class event it was. The over 500 quilts were truly awesome, the Merchant Mall vendors were varied and plentiful. Everyone seemed to agree that The Greater Tacoma Convention and Trade Center was an excellent new venue!

Hi everyone,

My sister, Galen Carpenter, is a 61 year old retired first grade teacher from Oregon. She signed up with 'Teach For America' and was assigned to a school near Gallup, NM. It is Mariano Lake Community School, and there are 198 Navajo kids, K-6th. (youngest is 4 in Kindergarten). There is also a FACE(family pre-school program with about 15 kids under four and they teach parenting skills to their teenage parents while earning their GED.)

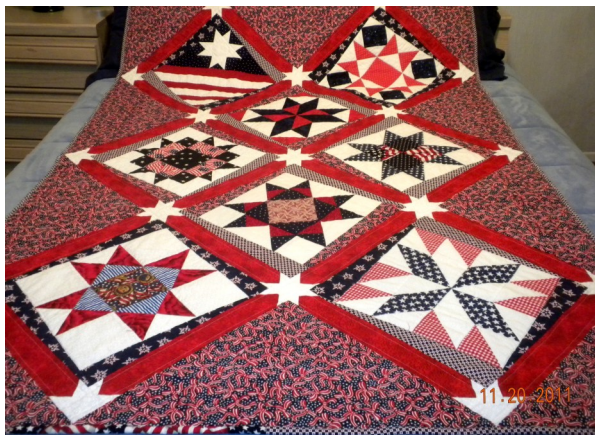
It is on the Navajo Nation land, a Bureau of Indian Education school, one of 185 nationwide. A lot of the kids live in the dorm during the week, since their families live so remotely.

Galen lives in a trailer just up the hill from the school and is the reading and math coach. She noticed that they don't have any games, and would love us to send gently used or new games for the kids. They are not allowed to have playing cards, but are learning Yahtzee, UNO and checkers, etc.

She would also love to have 10 sets of chess, to start a chess club. Also, easy versions of Scrabble, Candy Land, stuff like that for the younger kids. It all helps with their counting, reading, learning team work, and just plain having fun. Many of these kids don't have running water or electricity, have never been to the movies and don't have TV at home. Let's send them a big box of fun soon! You can bring your items to the December dinner or the January meeting or call me and I can come get them. Thanks for everyone's help, Sincerely, Janet Coggins

## Quilts for Wounded Warriors

**Requirements: Size: 48" by 78" (stretcher size), All cotton (including batting, 80/20 acceptable), Appropriate patriotic theme/ design, optional: Pillowcase, 20"x30", coordinating fabric**



A Thank You note from a quilt that went to Afghanistan, came home with the wounded warrior, and is now comforting the family too. This warrior's mother wrote that their "world turned upside down" when her 19 year old son lost his leg in the war. She said that each night when she keeps vigil at his bedside, she wraps up in his quilt and it reminds her how much people love him.

Our thanks go to Carollee Schuegraf for making 2 lovely warrior quilts in Nov, to Louise Welch for her "Star Power" quilt (shown at Guild), and to Janet Akman for the beautiful quilt shown here, made with friendship blocks from around the country. All were

sent to Camp Bastion, along with the many holiday cards made and donated by Guild members.

I hope to send another box of quilts in early December, to reach our warriors before Christmas. It's a busy time of year, but if you have a quilt to send please let me know since more are needed to help bring comfort to our wounded who can't be home for the holidays. ♦♦

### DEPARTMENT OF CHILD SERVICES (DCS) PROJECT

Janet Akman

First I want to thank everyone who has so generously participated in this project. If you missed the meeting, DCS did present us with a plaque in appreciation of our support. I am including here the guidelines for this program for new member information and any one else who may not be familiar with this project. You may want to work with another member to donate a kit.

We are continuing to support the foster children in the care of DCS. These children, because of domestic violence or unsafe conditions, often leave their homes with just the clothes on their backs. Our contributions help improve the quality of life for these children and families.

The idea is to provide emergency supplies for the children as they are moved into the foster system. The age group for these items is from infant to 8 years. The list below will serve as a guide as to the types of things that are needed.

**PLEASE NO USED ITEMS** What every Emergency Placement Bag could use: A gift card valued @\$25.00 for a department type store that is open late hours such as Target or Wal-Mart. This would cover the child if she/he needs a toothbrush, underwear, socks, pajamas or food. Grocery store gift cards would be second best option such as Vons, Ralphs or Albertsons. Even a \$10.00 card or individual items would help. **Ages 0-2** Diapers, wipes, baby clothes, onesies, bottles, blanket, age appropriate toys. Gift card. **Ages 3-5** Kids cups, pull-ups, toddler clothes, age appropriate toys. Gift card. **Ages 6-8** Clothes, shoes, socks, underwear (boys seem to prefer boxers), nightlight, flashlight, toothbrush and paste, hair brush, comb, pajamas, sweats (pants and shirts), jeans, shirt, jacket. Gift card. All donated items will be turned over to the Department of Children & Family Services, Torrance Regional Office, 2325 Crenshaw Blvd. Torrance. ♦♦



DreamMaker Quilts  
Memory Quilts & Machine Quilting

Dotty Allison

310.322.0535

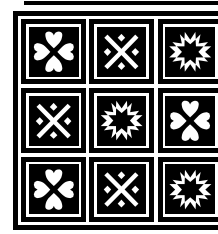
310.529.6142 Cell

El Segundo, CA  
WillQt4U@aol.com

## Membership

Stephania Bommarito

Nancy Payne



**New Members** We are very pleased to welcome our newest member – Barbara Carrington – to our Guild. Be sure to look for all our new members and introduce yourself at our Holiday Dinner meeting.

**Renewals** Our guild is continuing to grow with new and renewing members, newsletter only members, and our four lifetime members. There is still time to renew; however, renewals after November 1st are subject to a \$5.00 late renewal charge. If you need a form, come by the membership table, call or email, and we will get one to you immediately. The form can also be found on the “Members Only” section of our website. Please mail your form and check to Stephania.

**Name Badges** We will continue to pass out new badges at the December meeting. If everyone wears their name badges, we can get to know one another on a first name basis. If you still have an existing useable badge holder, it will save a bit of expense. If you have misplaced or lost your badge holder, we will have replacements at the meeting.

**2011-2012 Membership Booklet** The new booklet will be available at the January meeting. Stop by our table to pick up your copy.

**Be sure to stop by the Membership Desk and Sign-in** Our December door prize will be a \$10.00 gift certificate for Nina’s Quilt Barn. See you at the Guild meeting! ♦♦

## Intra-Guild

Dee Evans & Tracy Finnell



### Happy Holidays from Intraguild

**UFO Challenge** – We’ve had some recent additions to the notebook. Were any of them yours? If not, head on over to the table and get those finished UFOs entered. Did we mention there will be a prize?

**Christmas Stockings** – Please bring in those finished stockings. We’ll get those to needy folks for the holidays.

**Trivia Question** – Answer for last month’s question: How can you stop your fabric from fraying when washing? Answer - **Snip a small triangular from each corner of your fabric.**

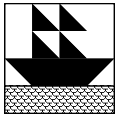
**Strip Swap** – Starting in January, we will have a new project, a 2 ½ inch strip swap. Start cutting those strips now, but **NO** holiday fabric please. There are 2 ways to participate. 1.) You can bring in 10 strips a month for 4 months (January thru April). **OR** 2.) Bring in 40 strips at one time in any month. In May, we will give you back 40 random strips from all the strips that were turned in plus the directions for a very simple lap quilt that will take approximately 2-4 hours to complete (top only). Questions? Please feel free to ask Tracy or Dee.

**Travel**

Joan Kennelly

Joan Kennelly is taking reservations for a bus trip for Road to California on Saturday, January 21st. The cost is \$42.00. It was a lot of fun to take the bus last year. It saves driving and parking. The cost of admission is included. If you sign up to white glove the cost of admission (\$8.00) will be subtracted. Sign up at the December meeting!!  
◆◆

!



**South Bay Quilters Guild**

Quilt Show 2012

Entry Application

The committee will accept hand written applications, but an electronic entry is preferred. Electronic entry forms are available on the website. **Submit electronic forms and digital photos to: [quiltshowentry@earthlink.net](mailto:quiltshowentry@earthlink.net).**

| Committee Use Only                                                                                                                                                                                                                                                                                                                                                                                                                                                                                                                                                  |                                                                            | Entry #                  | Picture #                |                                                                                                                                                                                                   | Program #         |                                                                                   |                    |
|---------------------------------------------------------------------------------------------------------------------------------------------------------------------------------------------------------------------------------------------------------------------------------------------------------------------------------------------------------------------------------------------------------------------------------------------------------------------------------------------------------------------------------------------------------------------|----------------------------------------------------------------------------|--------------------------|--------------------------|---------------------------------------------------------------------------------------------------------------------------------------------------------------------------------------------------|-------------------|-----------------------------------------------------------------------------------|--------------------|
| Exhibitor's Name                                                                                                                                                                                                                                                                                                                                                                                                                                                                                                                                                    |                                                                            |                          |                          | Do you wish to have your quilt judged for a fee of \$10. If so, you will receive written comments from the judge within 10 days after the show. Fee is payable at time of application submission. | Yes               | No                                                                                |                    |
| Address                                                                                                                                                                                                                                                                                                                                                                                                                                                                                                                                                             |                                                                            |                          |                          |                                                                                                                                                                                                   |                   |                                                                                   |                    |
| e-mail address                                                                                                                                                                                                                                                                                                                                                                                                                                                                                                                                                      |                                                                            |                          |                          |                                                                                                                                                                                                   |                   |                                                                                   |                    |
| Phone                                                                                                                                                                                                                                                                                                                                                                                                                                                                                                                                                               | Home                                                                       |                          | Work                     |                                                                                                                                                                                                   | Cell              |                                                                                   |                    |
| Title of Entry                                                                                                                                                                                                                                                                                                                                                                                                                                                                                                                                                      |                                                                            |                          |                          |                                                                                                                                                                                                   |                   |                                                                                   |                    |
| Designed by                                                                                                                                                                                                                                                                                                                                                                                                                                                                                                                                                         |                                                                            |                          | Made by                  |                                                                                                                                                                                                   |                   | Is the quilt available for sale? If yes, process/details will be provided to you. |                    |
| Quilted by                                                                                                                                                                                                                                                                                                                                                                                                                                                                                                                                                          |                                                                            |                          | Owner                    |                                                                                                                                                                                                   |                   | Yes <input type="checkbox"/> No <input type="checkbox"/>                          |                    |
| Description (100 words or less)                                                                                                                                                                                                                                                                                                                                                                                                                                                                                                                                     |                                                                            |                          |                          |                                                                                                                                                                                                   |                   |                                                                                   |                    |
| Techniques Used                                                                                                                                                                                                                                                                                                                                                                                                                                                                                                                                                     |                                                                            |                          |                          |                                                                                                                                                                                                   |                   |                                                                                   |                    |
| <input type="checkbox"/>                                                                                                                                                                                                                                                                                                                                                                                                                                                                                                                                            | Hand Pieced                                                                | <input type="checkbox"/> | Machine Pieced           | <input type="checkbox"/>                                                                                                                                                                          | Hand Appliquéd    | <input type="checkbox"/>                                                          | Machine Appliquéd  |
| <input type="checkbox"/>                                                                                                                                                                                                                                                                                                                                                                                                                                                                                                                                            | Hand Quilted                                                               | <input type="checkbox"/> | Machine Quilted          | <input type="checkbox"/>                                                                                                                                                                          | Back Art          | <input type="checkbox"/>                                                          | Embellished        |
| Other                                                                                                                                                                                                                                                                                                                                                                                                                                                                                                                                                               |                                                                            |                          |                          |                                                                                                                                                                                                   |                   |                                                                                   |                    |
| Measurements in Inches as hung                                                                                                                                                                                                                                                                                                                                                                                                                                                                                                                                      |                                                                            | Width (horizontal)       |                          |                                                                                                                                                                                                   | Length (Vertical) |                                                                                   |                    |
| <b>Only complete applications will be accepted.</b> All first choice entries may not be accepted based on the number of entries submitted and the hanging space available.                                                                                                                                                                                                                                                                                                                                                                                          |                                                                            |                          |                          |                                                                                                                                                                                                   |                   |                                                                                   |                    |
| If more than one quilt/garment is entered, please state your preference (example: 1 of 3)                                                                                                                                                                                                                                                                                                                                                                                                                                                                           |                                                                            |                          |                          |                                                                                                                                                                                                   |                   |                                                                                   |                    |
| Special Exhibit Item? Please check as appropriate.                                                                                                                                                                                                                                                                                                                                                                                                                                                                                                                  |                                                                            |                          | <input type="checkbox"/> | Sunday Antique Quilts                                                                                                                                                                             |                   | <input type="checkbox"/>                                                          | Quilters Challenge |
| Quilt Category for Viewers Choice                                                                                                                                                                                                                                                                                                                                                                                                                                                                                                                                   |                                                                            |                          |                          |                                                                                                                                                                                                   |                   |                                                                                   |                    |
| The Acquisitions Committee will make the final determination as to category and size.                                                                                                                                                                                                                                                                                                                                                                                                                                                                               |                                                                            |                          |                          |                                                                                                                                                                                                   |                   |                                                                                   |                    |
| <input type="checkbox"/>                                                                                                                                                                                                                                                                                                                                                                                                                                                                                                                                            | Traditional Pieced                                                         |                          | <input type="checkbox"/> | Hand Quilted                                                                                                                                                                                      |                   |                                                                                   |                    |
| <input type="checkbox"/>                                                                                                                                                                                                                                                                                                                                                                                                                                                                                                                                            | Appliqué                                                                   |                          | <input type="checkbox"/> | Machine Quilted                                                                                                                                                                                   |                   |                                                                                   |                    |
| <input type="checkbox"/>                                                                                                                                                                                                                                                                                                                                                                                                                                                                                                                                            | Art Quilt                                                                  |                          | <input type="checkbox"/> | Professionally Machine Quilted                                                                                                                                                                    |                   |                                                                                   |                    |
| <input type="checkbox"/>                                                                                                                                                                                                                                                                                                                                                                                                                                                                                                                                            | Garments - Can be a garment or apparel accessory (purse, hat, scarf, etc.) |                          | <input type="checkbox"/> |                                                                                                                                                                                                   |                   |                                                                                   |                    |
| <p style="text-align: center;"><b>. Release for photography.</b> The guild may arrange for a photographer to take pictures of our quilt show entries and create a DVD for sale at the show. The guild will receive a portion of the proceeds and the copyright for the images on the DVD will be held by the guild. In order to include your quilt on the DVD, we must have your signature below allowing us to photograph your quilt and include it on the DVD. If you do not want your quilt photographed, please indicate "NO" below in the signature block.</p> |                                                                            |                          |                          |                                                                                                                                                                                                   |                   |                                                                                   |                    |
| Signature: _____                                                                                                                                                                                                                                                                                                                                                                                                                                                                                                                                                    |                                                                            |                          |                          | Date: _____                                                                                                                                                                                       |                   |                                                                                   |                    |

**AAA Sewing & Vacuum Ctr.**  
**3770 Sepulveda Blvd**  
**Torrance, CA 90505**  
**310-791-1190**

**HAPPY HOLIDAYS!**

**CABINET SALE**  
**30% OFF M.S.R.P.**  
**All Horn, Koala,**  
**Unique Sew, and**  
**Roberts Sewing**  
**Cabinets**  
**Are on SALE for the**  
**Month of December!**

**BERNINA**  
**brother**  
**PFAFF**  
**JUKI**  
**baby lock**

[www.aaasewingandvacuum.com](http://www.aaasewingandvacuum.com)

**A Tour Service for Quilters!**

**The Traveling Quilters**  
 P.O. Box 3214, Manhattan Beach, CA 90266

**A Tour Service for Quilters!**

2012 -  
 23-26 February - Temecula Quilt-Away Re-treat  
 5 May - Mystery Trip  
 19-25 August - Quilting on Puget Sound - the APWQ show in Tacoma and much, much more  
 September - Temecula Quilt-Away Retreat

Would you like to be on our mailing list? Just drop us a note at the address above, or e-mail: [pam@travelingquilters.com](mailto:pam@travelingquilters.com)




*Linda's Quilting Studio*  
 Professional Longarm Machine Quilting

San Pedro, CA Linda Crane  
 Call For Appt. 310 833-4141

*Raylene Christmas*  
 310-704-7312

**Long Arm Quilting**  
**Hand-Made Quilts**

 Find us on **Facebook** The guild is on **FACEBOOK** and **Twitter!**

Users can access the Facebook link and Twitter link from our home page.

 *Luella's Quilt Basket*

Thank you for **23** wonderful years!

Please join us on Saturday, December 17 for our store-closing party. Have a piece of cake and help us celebrate for the new adventures that await us!

Our sale continues with lots of great values! Browse our holiday decoration and display items available for sale. Great prices on sewing machines!

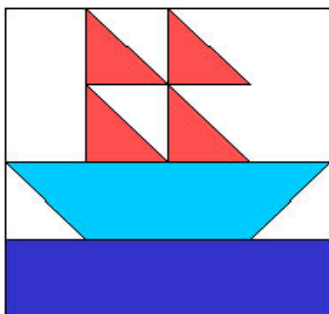
Are you looking for a holiday gift? We also have lovely quilts for sale

---

**Luella's Quilt Basket**  
 1512 Aviation Blvd.  
 Redondo Beach, CA 90278

# Upcoming Events

- January 19-22 **Road to California** Thursday - Saturday 9:30 a.m. - 6 p.m.,  
 Sunday 10 a.m. - 3:30 p.m.  
 Ontario Convention Center, Ontario CA  
 Wednesday, January 18. Preview Night, Wednesday, January 18  
 Visit [www.road2ca.com](http://www.road2ca.com) to register for workshops.
- February 19-23 **Santa Barbara Quilting Retreat** with Gwen Marston and Freddy Moran  
 February 19-23, 2012, Crowne Plaza Hotel, Ventura  
 Registration is open at [www.santabarbaraquiltingretreats.com](http://www.santabarbaraquiltingretreats.com).  
 There is a commuter price listed and a 10% guild discount.
- February 23-26 **Traveling Quilters Quilt-Away Weekend** at Vina de Lestonnac.  
 For information contact: Pam Overton, [pam@travelingquilters.com](mailto:pam@travelingquilters.com)
- March 2 - 3 **Desert Guilds 2012 Quilt Show**, Desert Splendor. 10:00 am to 4:00 PM,  
 Being held at the Palm Springs Pavilion, 401 S Pavilion Way, Palm Springs, CA.  
 Host Guilds - Pass Patchers, Beaumont, CA., Coachella Valley Guild,  
 Coachella Valley, CA. and Cactus Sewables, Yucca Valley, CA.  
 Information PO Box 1181, Yucca Valley, CA 92286 or our website is [desert-guildsquiltshow.com](http://desert-guildsquiltshow.com)



South Bay Quilters Guild  
 P.O. Box 6115  
 Torrance, CA 90504

**Guild Meeting:**

**Dinner Meeting begins at 6:30**

**December 13, 2011**

**Reminders:**

Wear your Name Tag

Invite a friend to the meeting

